



# **Structural Dynamic Testing and Design Evaluation of the Formax Detector Gantry**

G. Felcsuti, J. B. González

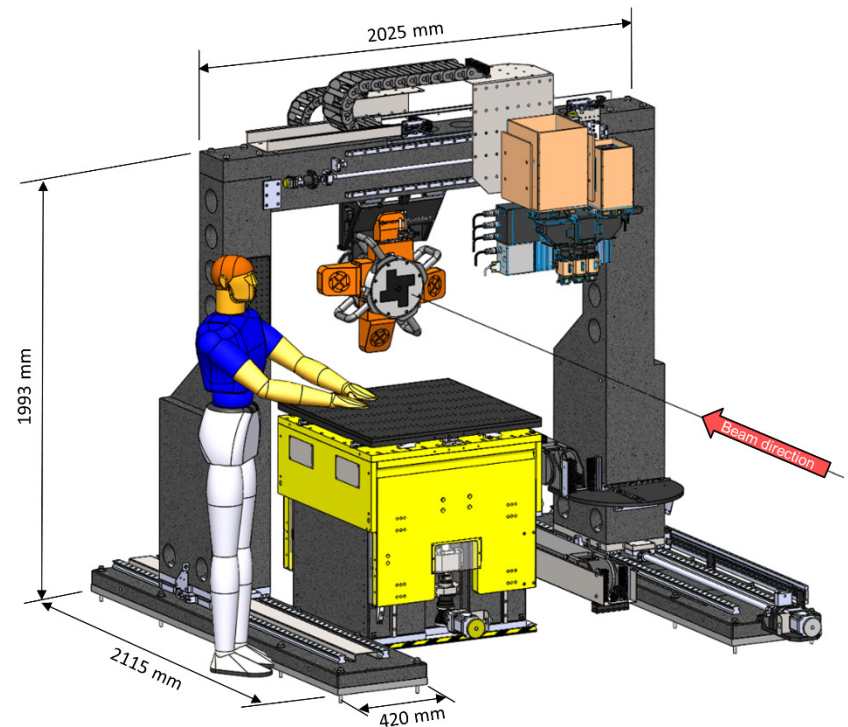
MEDSI2023, 2023-11-09

# Outline

- Background
- Design, requirements and simulation
- Experimental verification
- Correlation between measurement and calculation
- Result summary and discussion

# Background, the ForMAX gantry

- Formax is one of the latest beamlines at MAX IV
- Studies hierarchal materials by combining multiple techniques
- Granit gantry
- Independent in-and-out motion of tomography microscope and WAXS detector
- Longitudinal motion on motorized floor rails (grouted)



# Design goals, expectations

- Specifications for the ForMAX Gantry:
  - lowest eigenfrequency >30 Hz (standard “>55Hz“ lowered)
  - <2 $\mu$ m RMS (transversal to the beam, 4-100 Hz, tomography stage)
  - vibration goals instead of strict vibration requirements

# Simulation model

## FEA model in ANSYS

- Gantry: geometry according to CAD
- Detectors: geometry according to CAD, evenly distributed mass<sup>1</sup>
- Base plate of rails grouted to floor (fixed BC)
- Rail carriage along the motion axis: sliding contact with stiffness<sup>1</sup>

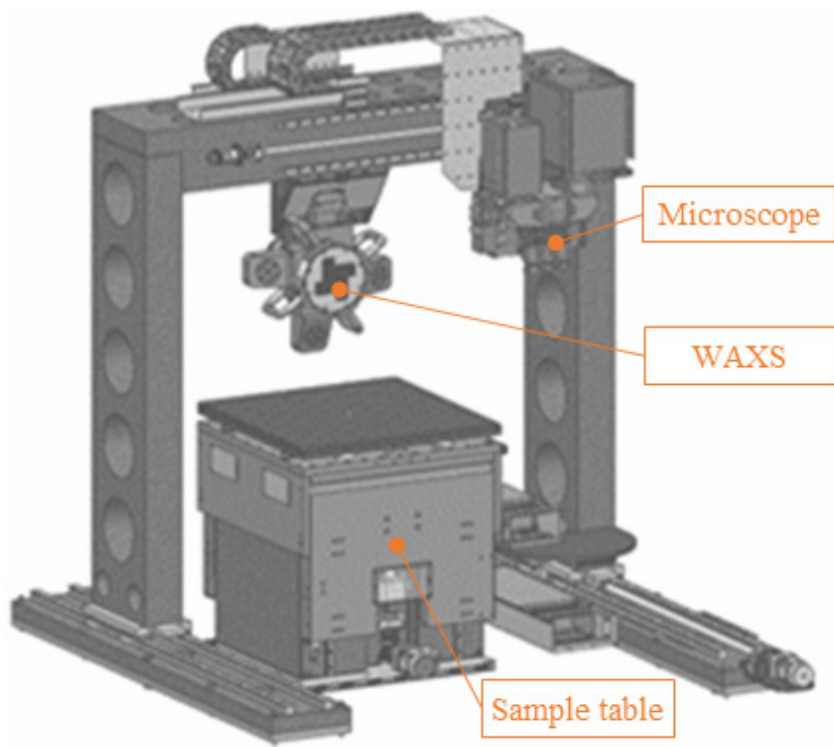
<sup>1</sup> based on nominal mass and rigidity values provided by manufacturers

## Initial calculation, 9 Hz

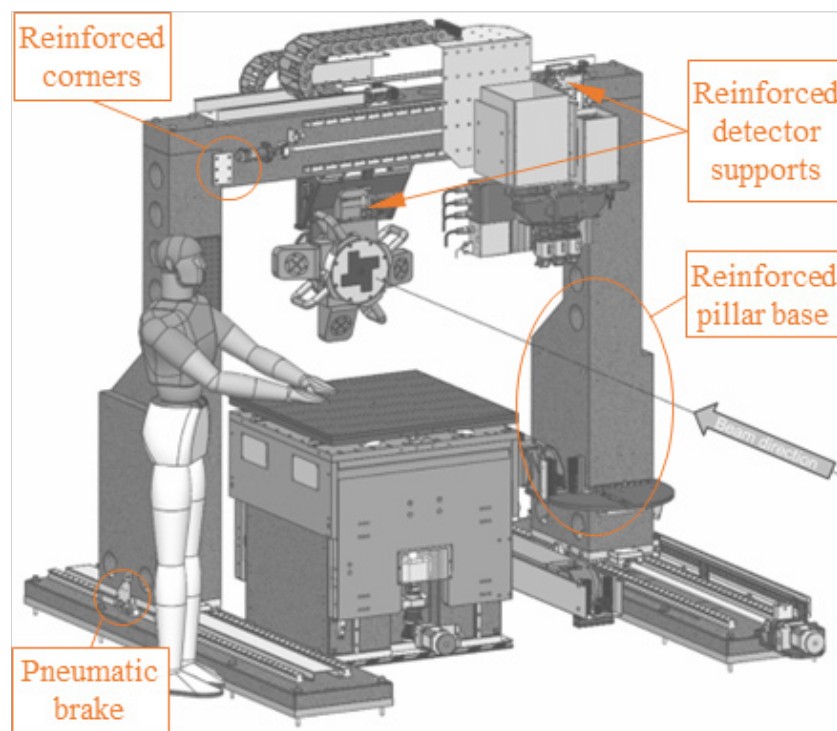


# Design improvements

## Initial design



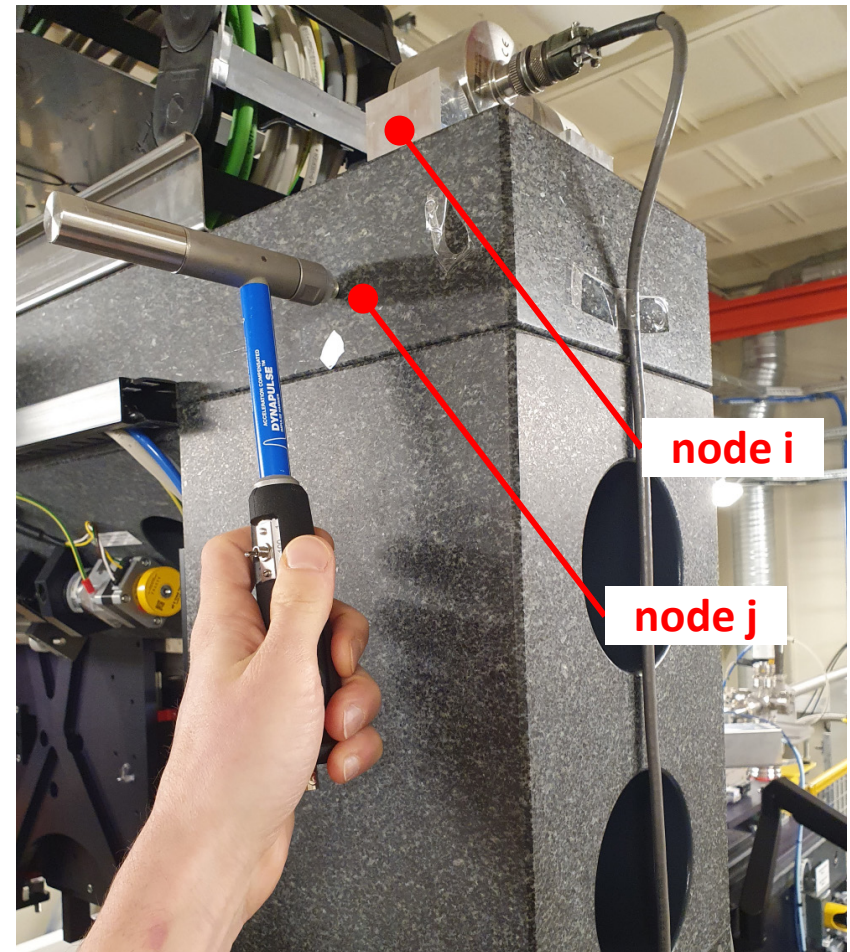
## Final design



# Frequency response functions (FRF)

- Force-response relationship between two DOFs as a function of frequency:

$$\text{FRF}_{i,j}(f) = \frac{\text{response at node } i}{\text{excitation at node } j}$$

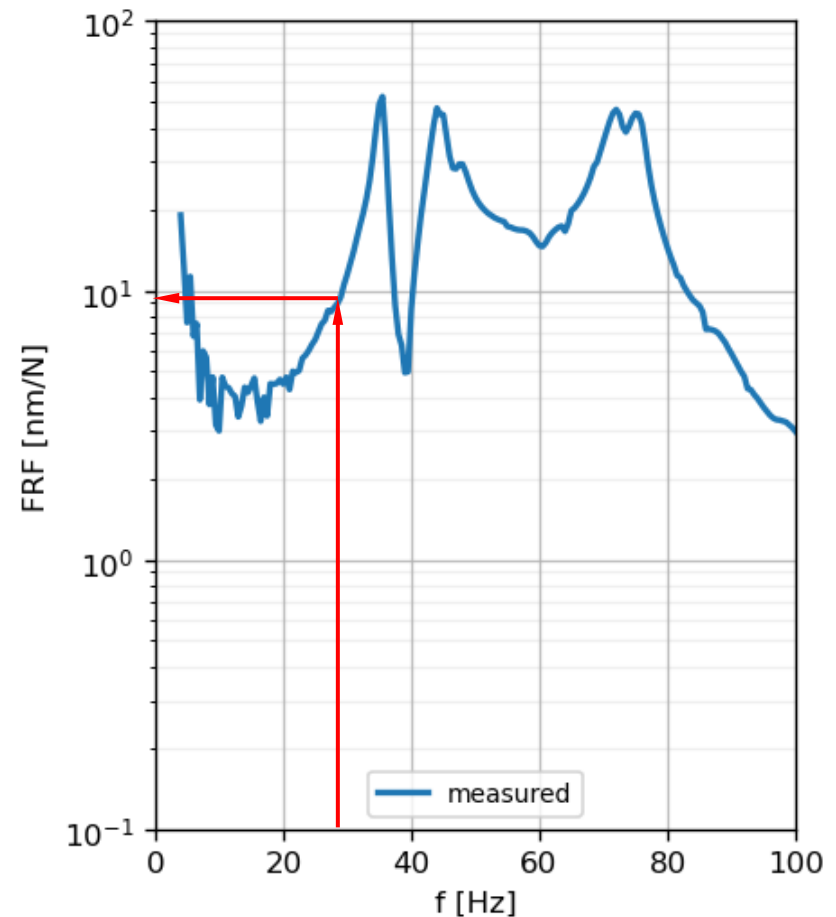


# Frequency response functions (FRF)

- Force-response relationship between two DOFs as a function of frequency:

$$\text{FRF}_{i,j}(f) = \frac{\text{response at node } i}{\text{excitation at node } j}$$

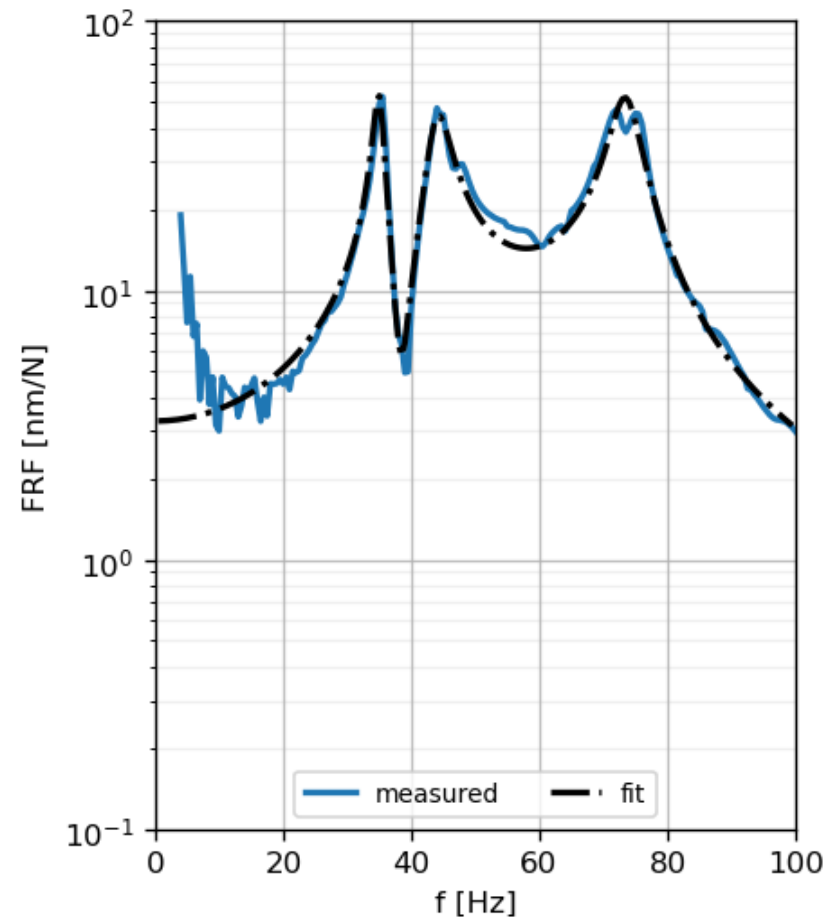
- Peaks  $\rightarrow$  resonances
- $f=0\text{Hz}$   $\rightarrow$  static stiffness





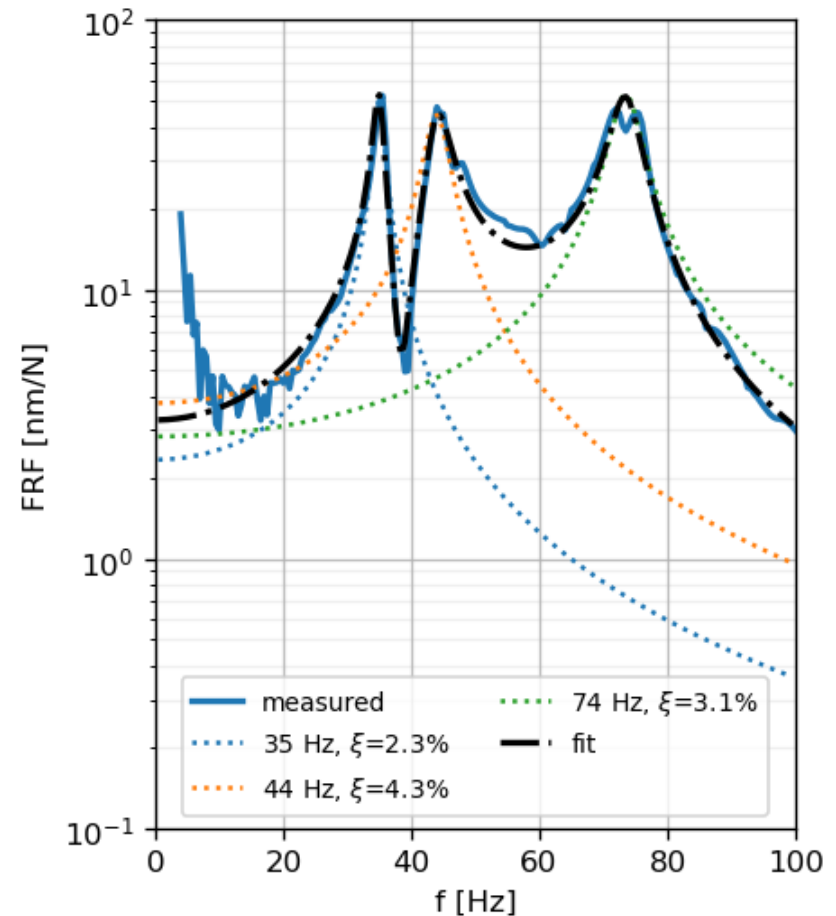
# Experimental modal analysis (EMA)

- Experimental technique to extract vibration modes from measurements
- “Fitted curve” has parameters with physical meaning (natural frequency, damping, mode shape participation for SDOF oscillator)
- suited for updating FE model



# Experimental modal analysis (EMA)

- Experimental technique to extract vibration modes from measurements
- “Fitted curve” has parameters with physical meaning (natural frequency, damping, mode shape participation for SDOF oscillator)
- suited for updating FE model

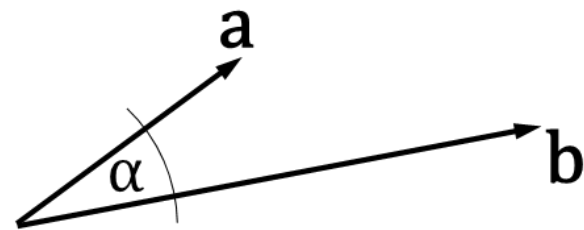


# Modal Assurance Criterion (MAC)

- Easier to “guess” mode shapes with FE than eigenfrequencies
- MAC compares two modeshapes (e.g. calculated to measured)
- MAC is between 0-1 (>0,9..0,95 indicates a match)
- The basic idea: mode shapes are unscaled vectors (no magnitude, only direction) → angle can be calculated with dot product

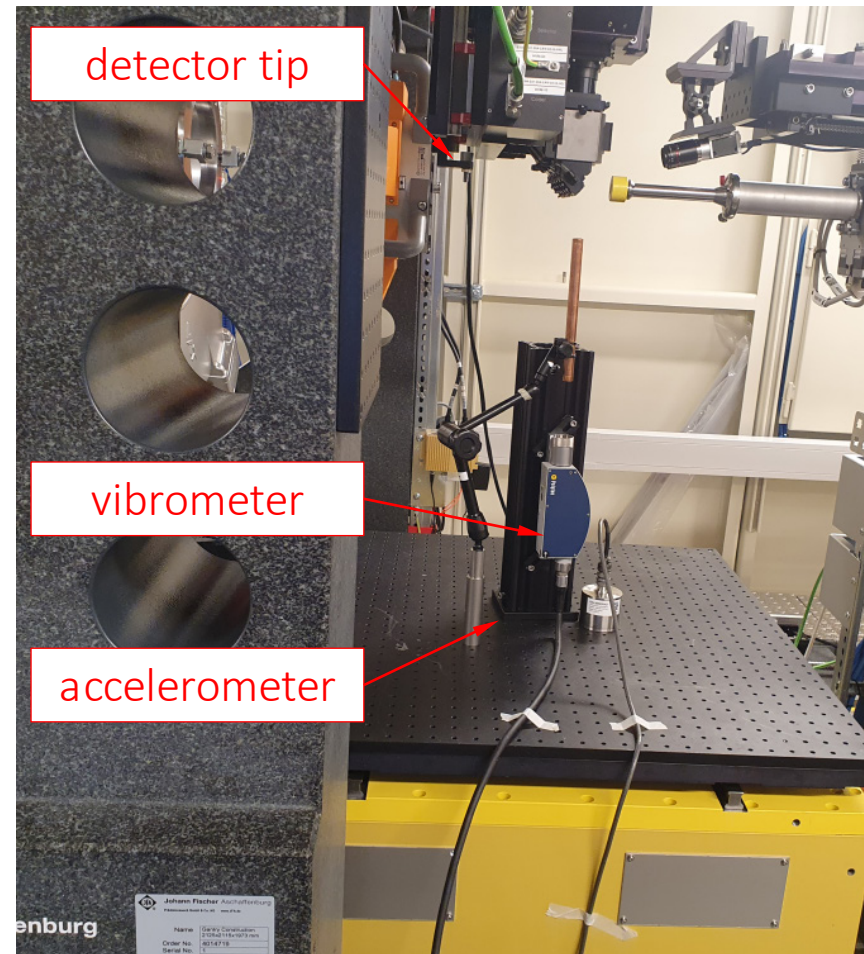
$$\mathbf{a} \cdot \mathbf{b} = \sum a_i b_i$$

$$\mathbf{a} \cdot \mathbf{b} = |\mathbf{a}| \cdot |\mathbf{b}| \cos \alpha \rightarrow \cos \alpha = \frac{\mathbf{a} \cdot \mathbf{b}}{|\mathbf{a}| \cdot |\mathbf{b}|}$$



# Displacement vibration rms

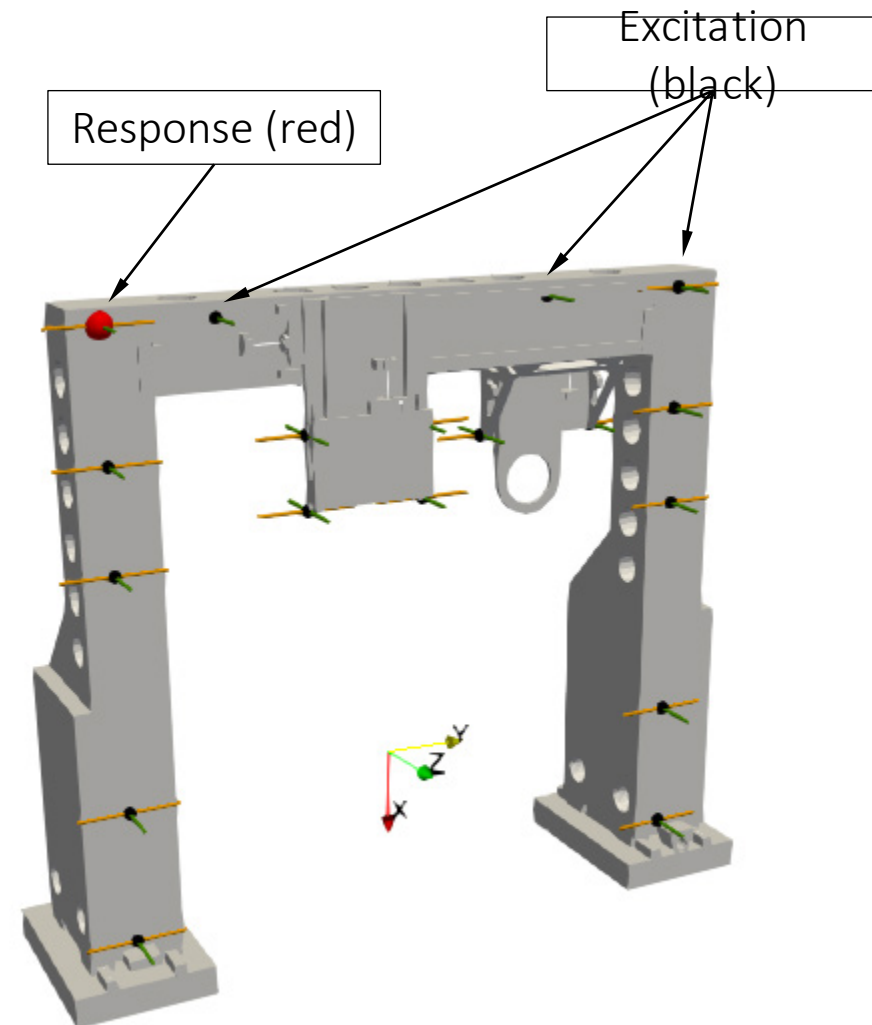
- Measured only in a plane transversal to the beam
- Vibration of sample table added to relative vibration table-to-detector tip
- <20 nm rms (4-100 Hz) → meets the design goal with large margin
- Insignificant influence from pneumatic brake



direction	brake	ambient machinery	
		OFF	ON
transversal	engaged	nan nm	18 nm
	not engaged	12 nm	20 nm
vertical	engaged	14 nm	18 nm
	not engaged	16 nm	19 nm

# EMA, test setup

- Roving hammer technique
- Aiming for acceptable signal-to-noise ratio (SNR) while keeping forces low → mild hammer blows + very sensitive accelerometer
- Vertical DOFs excluded (initial measurements indicated high rigidity)
- With pneumatic brake





12

08/07/2024



MEDSI2023





13

08/07/2024

MEDSI2023





14



08/07/2024



MEDSI2023





# EMA results

- five modes were identified under 100 Hz with 2-3% damping
- Complex modes due to local damping elements (eg ballscrews)
- In general, poor measurement quality due to difficulty in obtaining good SNR

	Nat. freq.	$\xi$ (% of crit.)	MPC
1	34.7 Hz	1.95%	68.31%
2	37.9 Hz	3.11%	78.95%
3	43.8 Hz	3.43%	77.82%
4	62.9 Hz	2.33%	41.63%
5	73.3 Hz	2.54%	84.94%

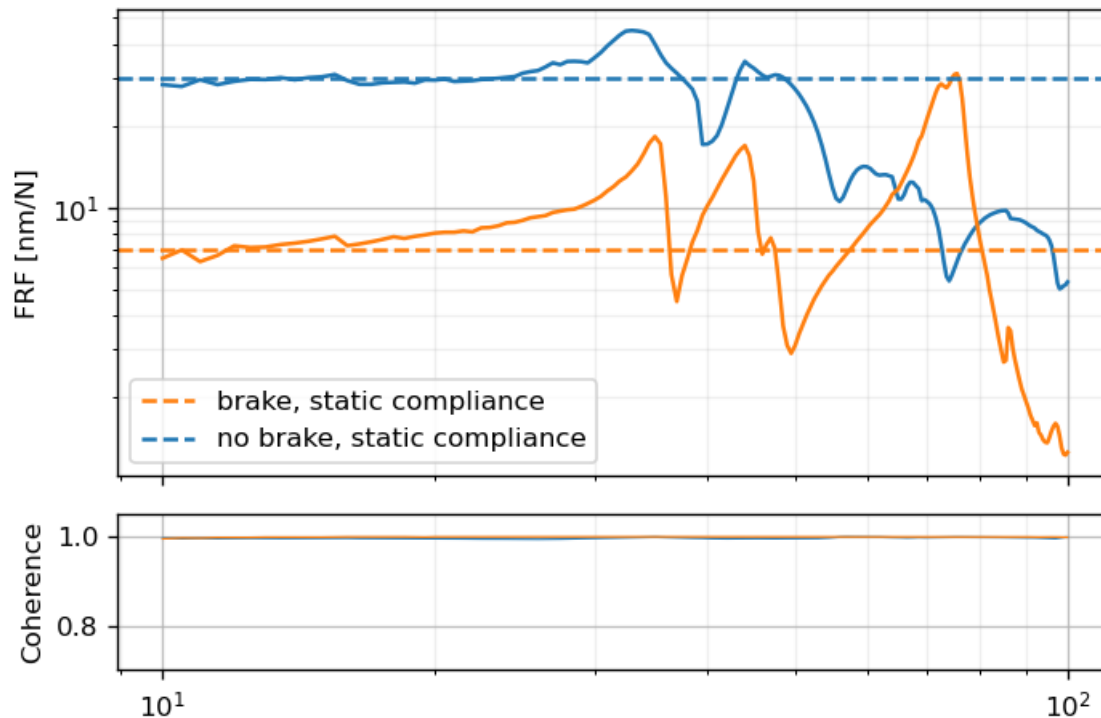
simulated mode #0 20.1 Hz mode #1 28.8 Hz mode #2 29.5 Hz mode #3 41.8 Hz mode #4 57.2 Hz mode #5 62.3 Hz

measured

34.7 Hz	86.7%	3.5%	0.0%	43.5%	11.6%	7.2%
37.9 Hz	0.0%	0.5%	98.5%	0.3%	0.0%	82.9%
43.8 Hz	86.5%	1.2%	0.0%	49.3%	14.1%	8.1%
62.9 Hz	7.2%	65.1%	10.2%	41.9%	1.2%	14.7%
73.3 Hz	2.1%	79.1%	0.6%	15.0%	0.3%	1.4%

# Pneumatic brake

- stiffness of leg support determined from low frequency asymptote:
  - With pneumatic brake :  $1,4e8$  N/m (opposite leg very similar)
  - Without pneumatic brake  $3,3e7$  N/m
  - Original estimate for driven leg (motorized side):  $3e7$  N/m



# Conclusions

- Way of working summarized
- Design goals in terms of mechanical stability are met
- Difficulties in measuring modal parameters on stiff and heavy structure (poor SNR)
- Caveats of using MAC number for measurement-to-calculation correlation
- Pneumatic brake did not have a significant influence on total rms
- Underestimated rail stiffness

# THANK YOU FOR LISTENING!

- Acknowledgements
  - FE calculations: Mohammad Al-Najdawi
  - Testing: Magnus Malmgren
- Contact: [gabor.felcsuti@maxiv.lu.se](mailto:gabor.felcsuti@maxiv.lu.se)