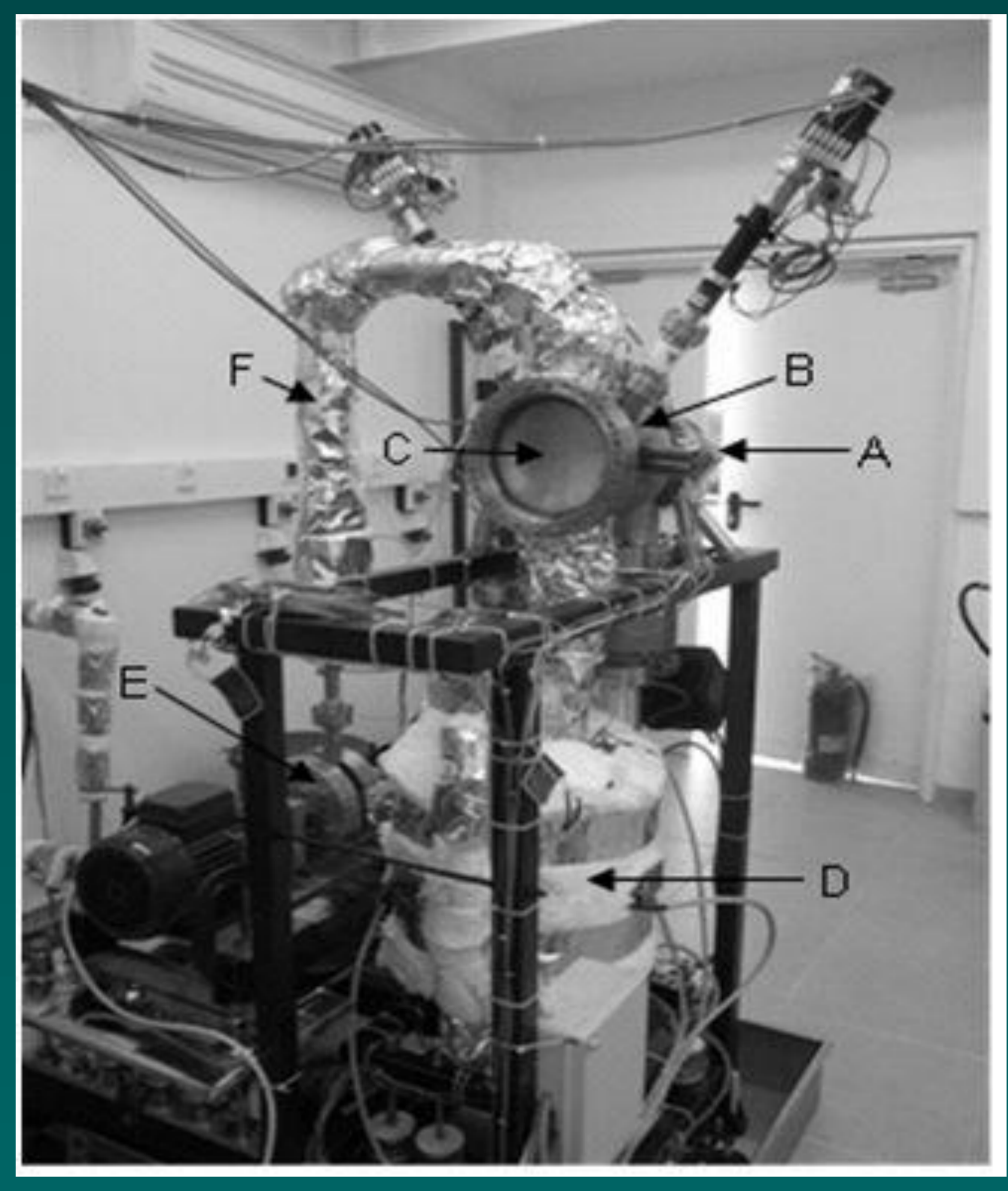


# Control of the SARAF High Intensity CW Proton Beam Target Systems

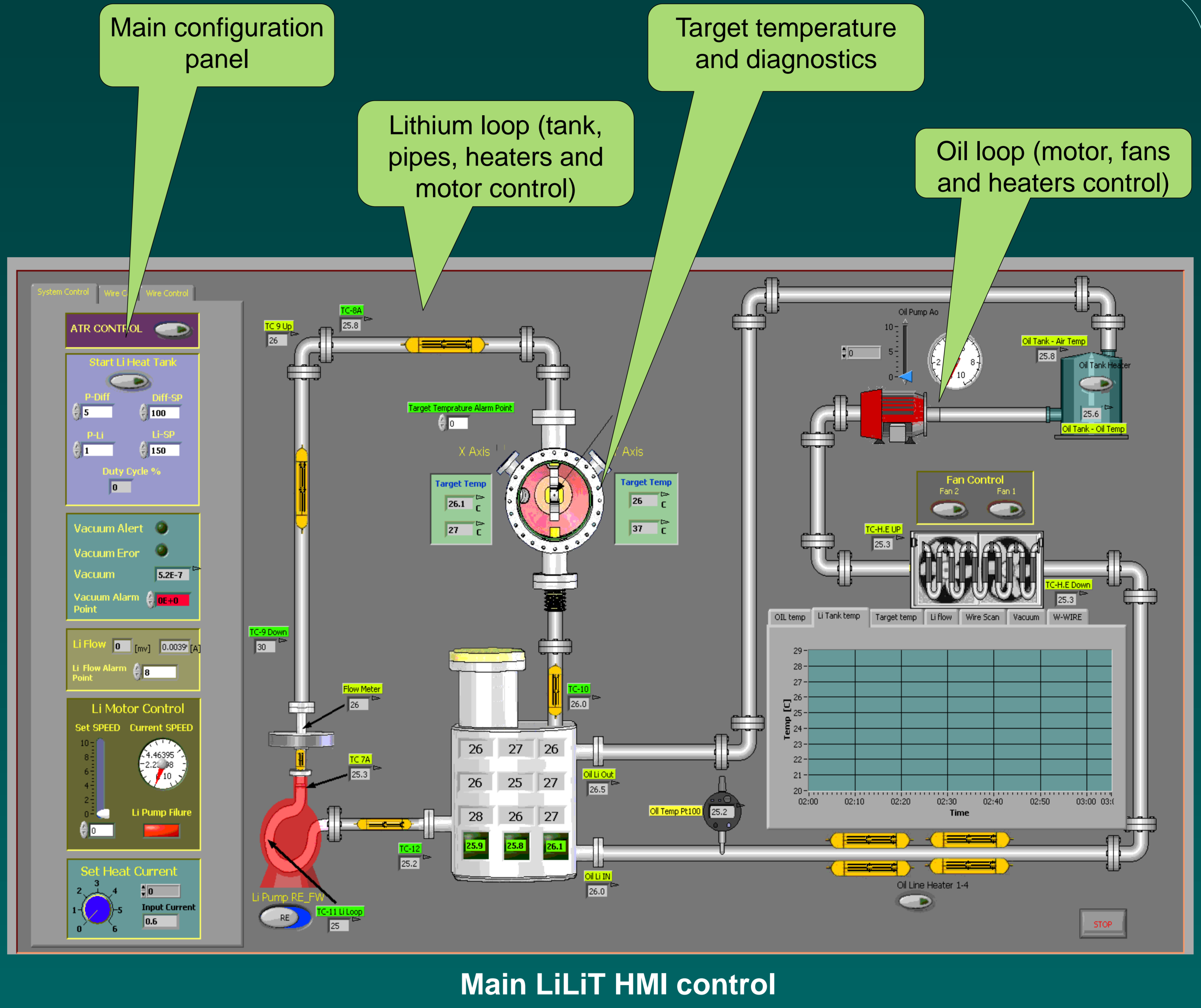
I. Eliyahu, N. Hazensprung, M. Bisyakoev. I. Silverman, D. Kijel, L. Weissman, E. Reinfeld, A. Arenstam, S. Halfon, I. Gertz D. Berkovits, Soreq NRC, Yavne 81800, Israel

## The LiLiT Target

The Human Machine Interface (HMI) was built to reflect as closely as possible the system structure, presenting its functionality and parameters in the clearest intuitive way.

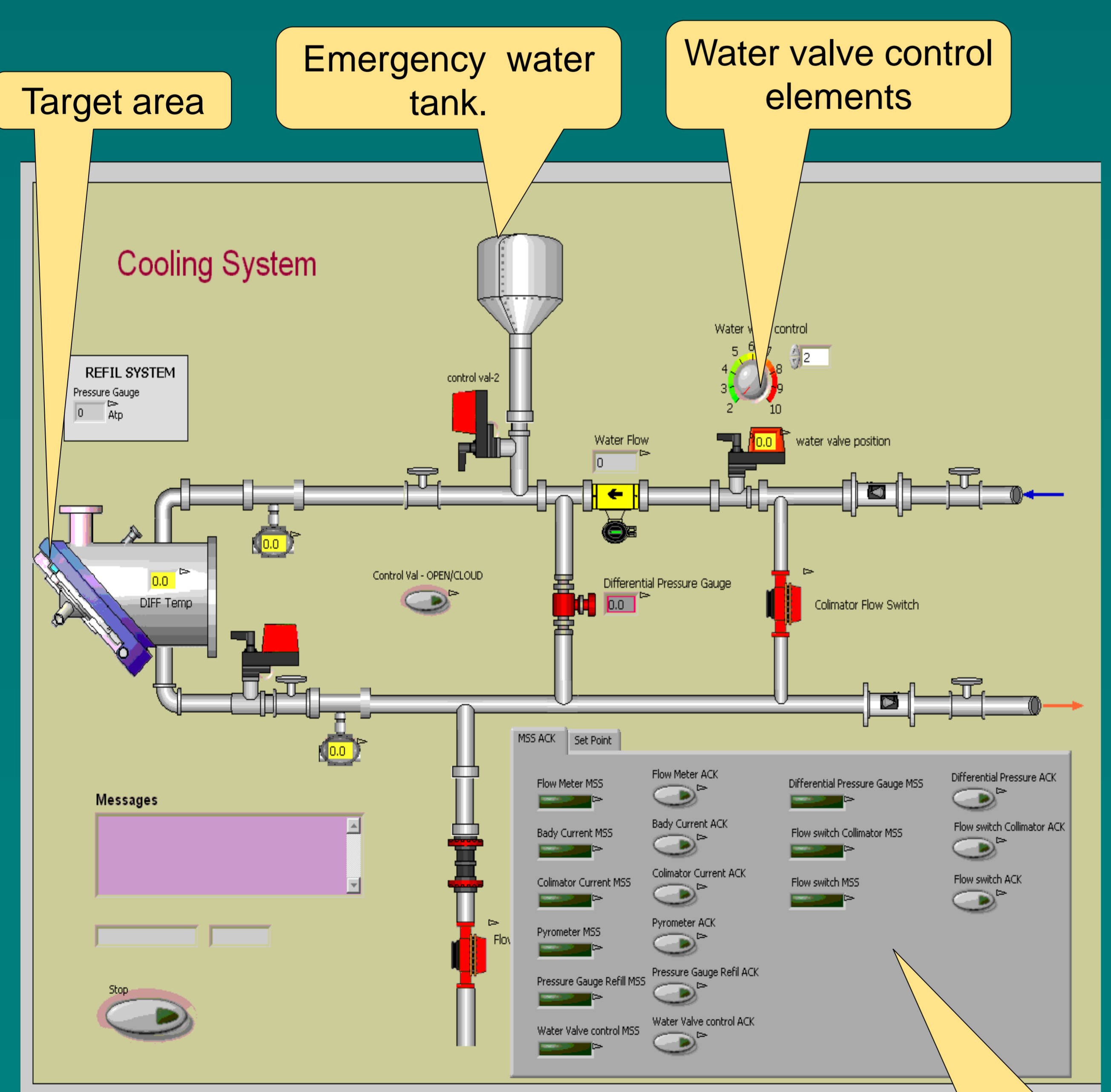


LiLiT target side view

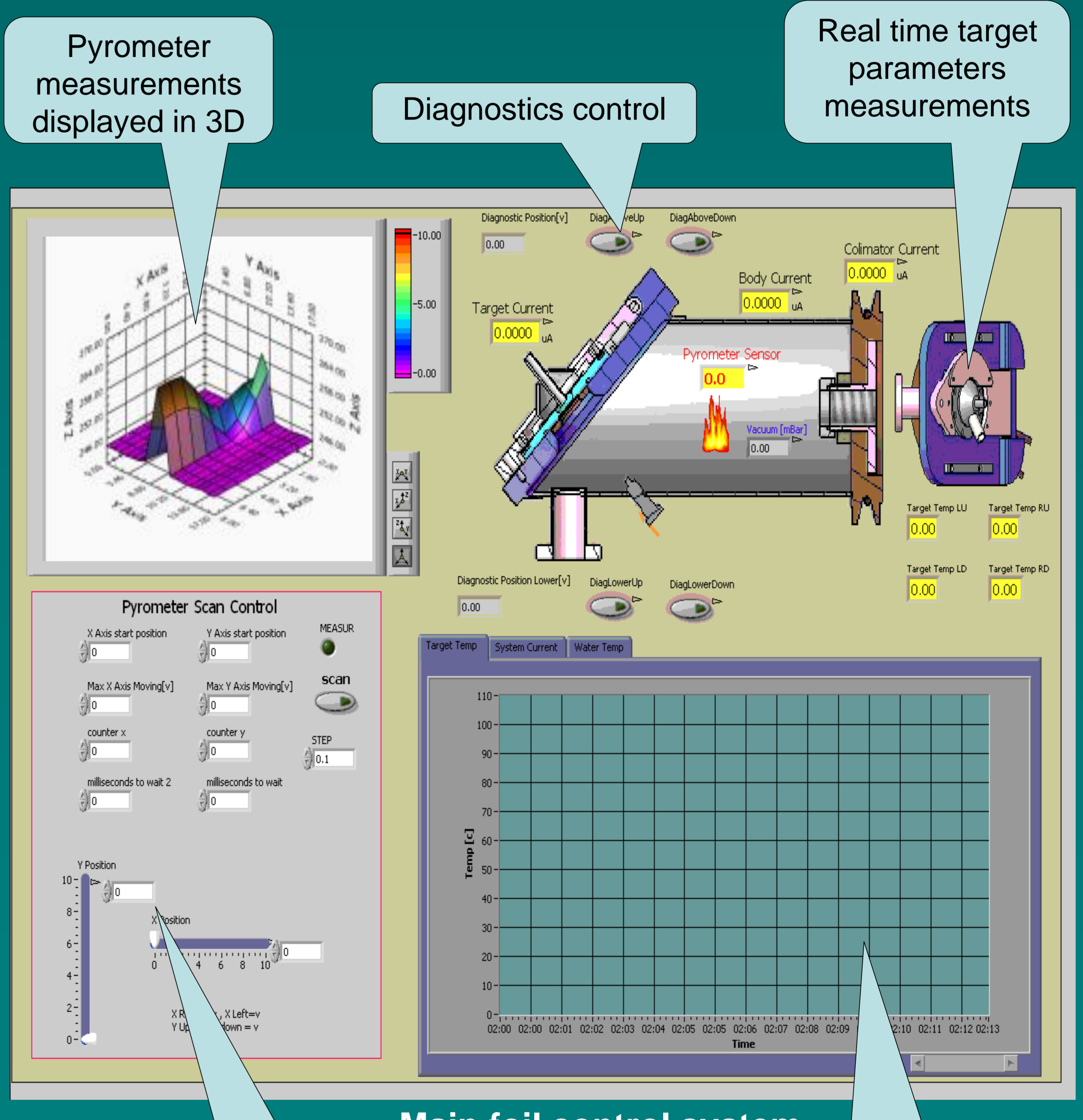


## The Foil Target

A 25 microns thick Havar foil of 20 mm diameter is irradiated by an intense proton beam. The other side of the foil is cooled by liquid metal NaK alloy, which is in contact with a water cooled stainless steel plate.



Main cooling control system and MSS



Main foil control system

MSS configuration and control panel

Main pyrometer scan system control panel

Target temperatures, pressure, currents measurements running plots