



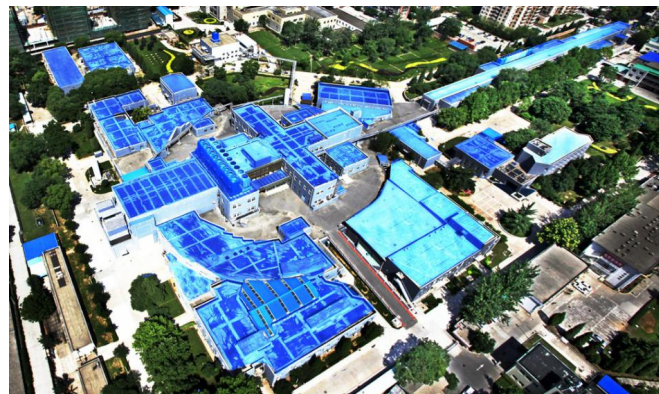
Invitation to attend IBIC2024

Junhui Yue

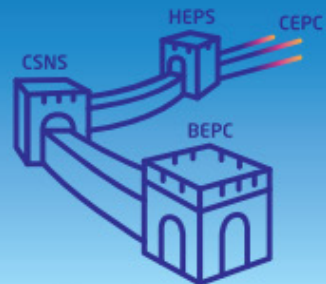
Institute of High Energy Physics (IHEP)

2023-09-14

IBIC2023, Saskatoon, Canada, September 10-14, 2023



IBIC2024 will be hosted by IHEP from Sep.9 to Sep.13 next year!



IBIC2024

Sept. 9-13, 2024 · Beijing, China

INTERNATIONAL BEAM INSTRUMENTATION CONFERENCE

Sept. 9 -13, 2024 · Beijing, China

Organized by Institute of High Energy Physics(IHEP) Junhui Yue, SPC Chair Jianshe Cao, Conference Chair



Introduction of IHEP and accelerators

The Institute of High Energy Physics (IHEP), a Chinese Academy of Sciences research institute, is China's biggest laboratory for the study of particle physics, advanced accelerator physics and technology, advanced beam technology and application.

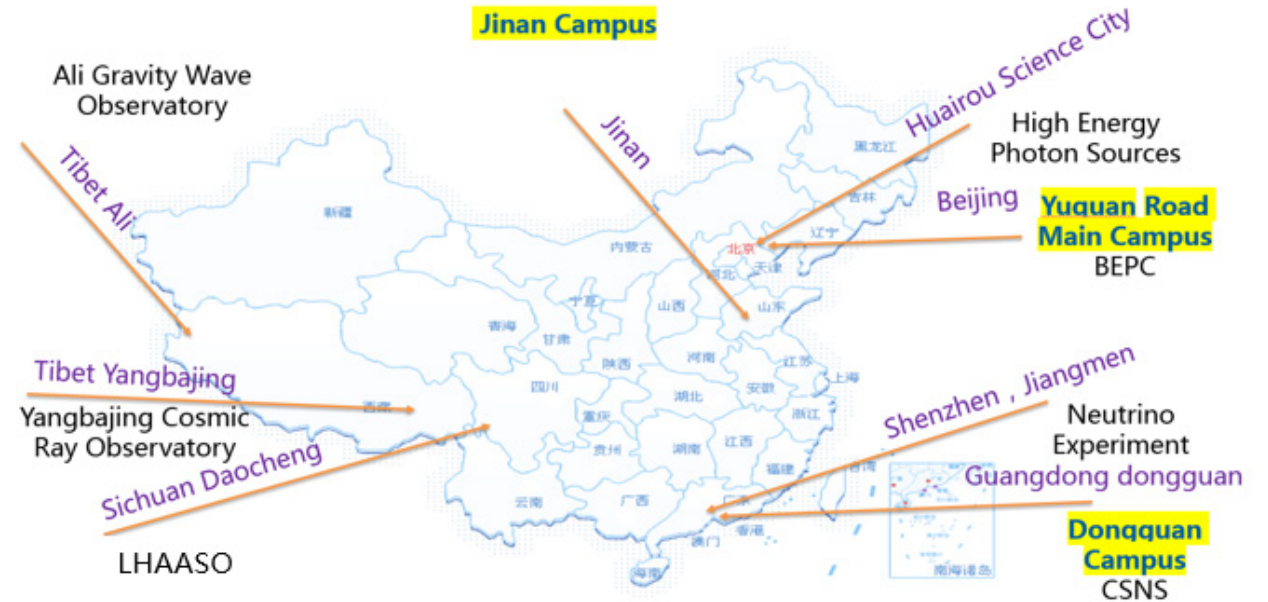
IHEP's main campus is at Yuquan Road in the west part of Beijing. The Beijing campus hosts the Beijing Electron-Positron Collider, the BESIII experiment, the Beijing Synchrotron Radiation Facility, and most of IHEP's research and administrative staff.

The Dongguan campus, in Guangdong province in the south of China, is home to the China Spallation Neutron Source facility.

The Jinan Campus in charge of Achievement transformation.

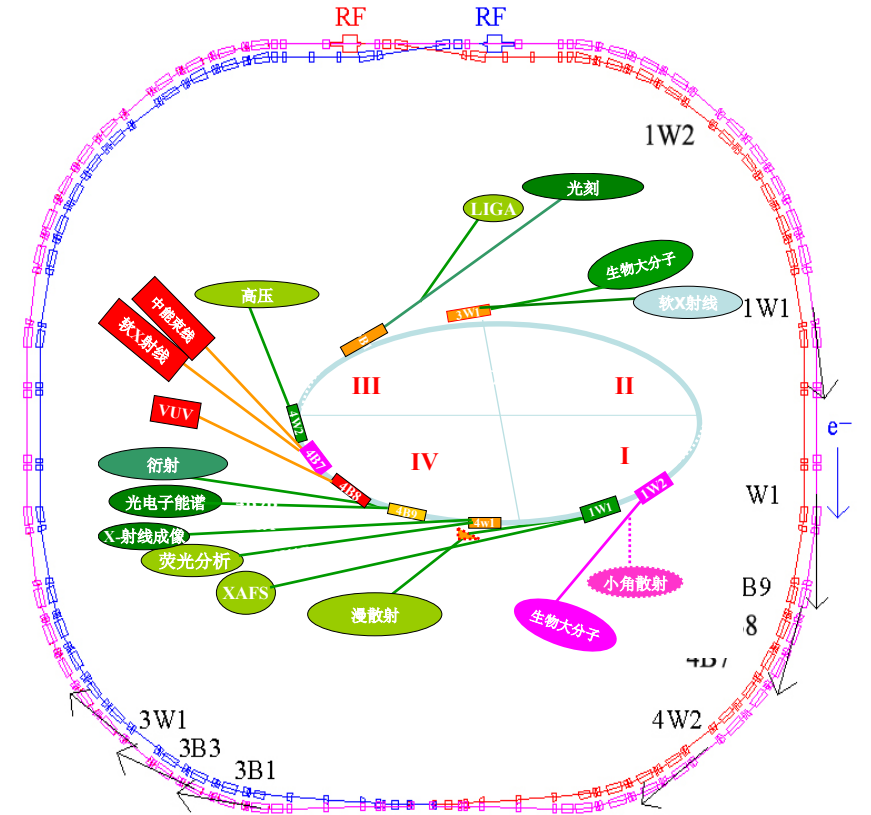
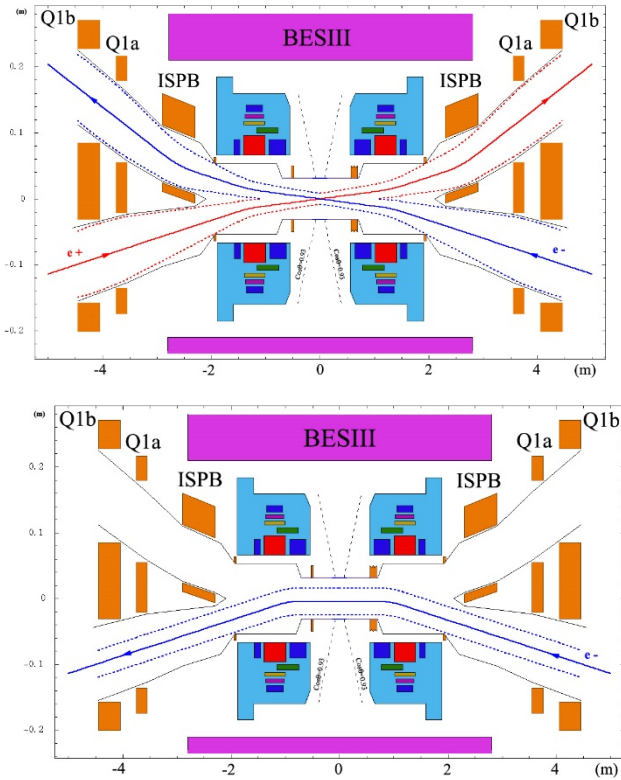
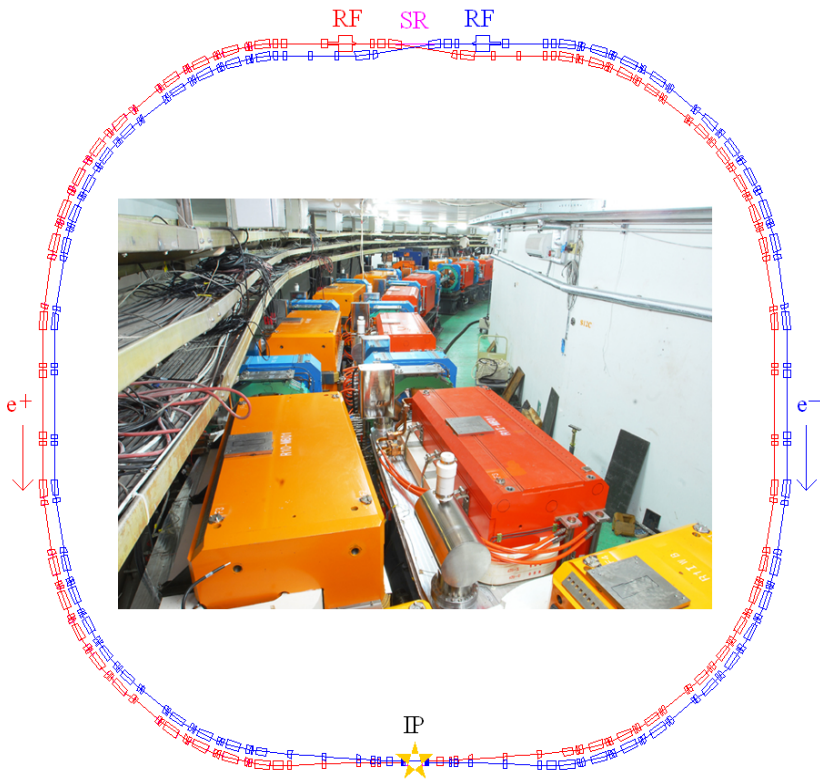
In addition, IHEP runs experiment sites at Daya Bay and Jiangmen (both in Guangdong Province), Yangbajing (Tibet) and Daocheng (Sichuan).

IHEP also have run several astronomical satellites like as Hard X-ray Modulation Telescope.



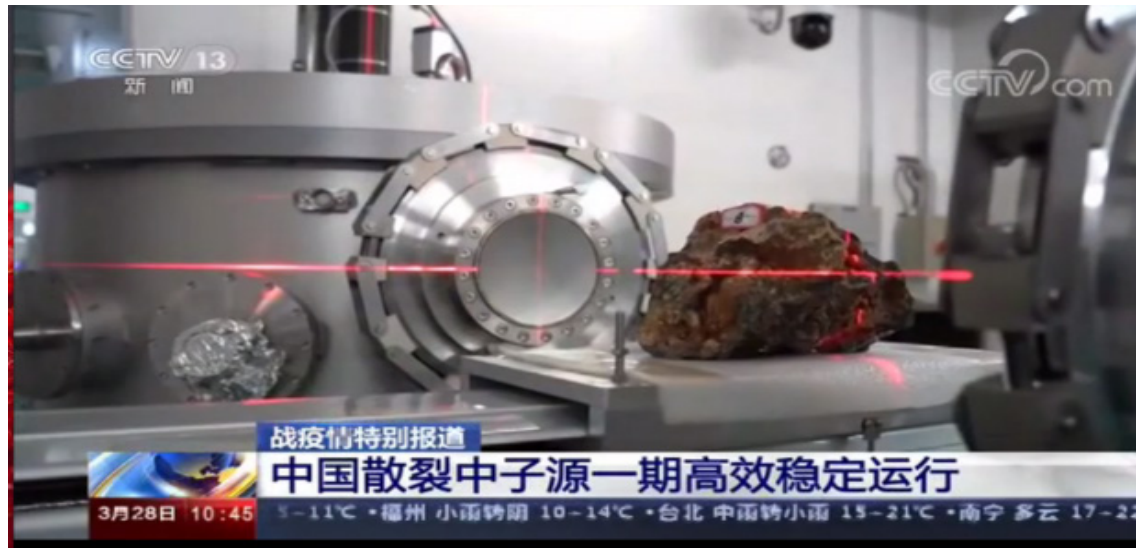
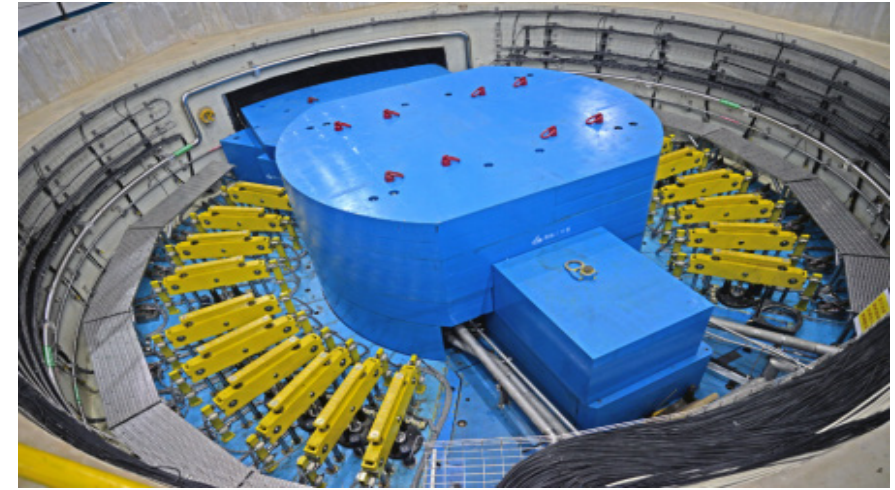
BEPC, BEPCII and BEPCII-U

Beijing Positron Electron Collider, is a machine who has run 35 years since 1988, not only for physics, but also for synchrotron light users. It run at **950mA@1.89GeV** in collider mode, the peak luminosity is $1.1 \times 10^{33} \text{cm}^{-2} \text{s}^{-1}$ and **250mA@2.5GeV** top up for synchrotron mode.



CSNS and CSNSII

CSNS-The 4th Spallation Neutron Source in the world. It has run with 140kW beam power now, In CSNSII, the beam power will increase to 500kW. It lies in Guangdong Province, in south part of China. The distance between CSNS and BEPCII is 2100km.



HEPS

HEPS-The fourth generation light source, 6GeV, 200mA, 60pmrad. It lies in Huairou science city, it is about 80km away from conference center (or BEPC campus) .it need one and half hour from one place to another place.

June 29, 2019, Start to install equipment.

March 9, 2023, Start to commissioning Linac.

July 25, 2023, Start to commissioning booster ring.

January of 2025, to commissioning the beam line.



Introduction of Beijing

As the capital of the People's Republic of China, Beijing is located in northern China,

The city covers an area of more than 16,410 square kilometers (6336 square miles) and has 21 million people.

Beijing is a city with four distinct seasons. The best days are late spring and autumn.

Records show that Beijing has been an inhabited city for more than three thousand years.

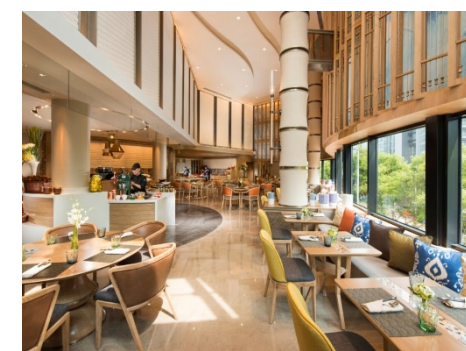
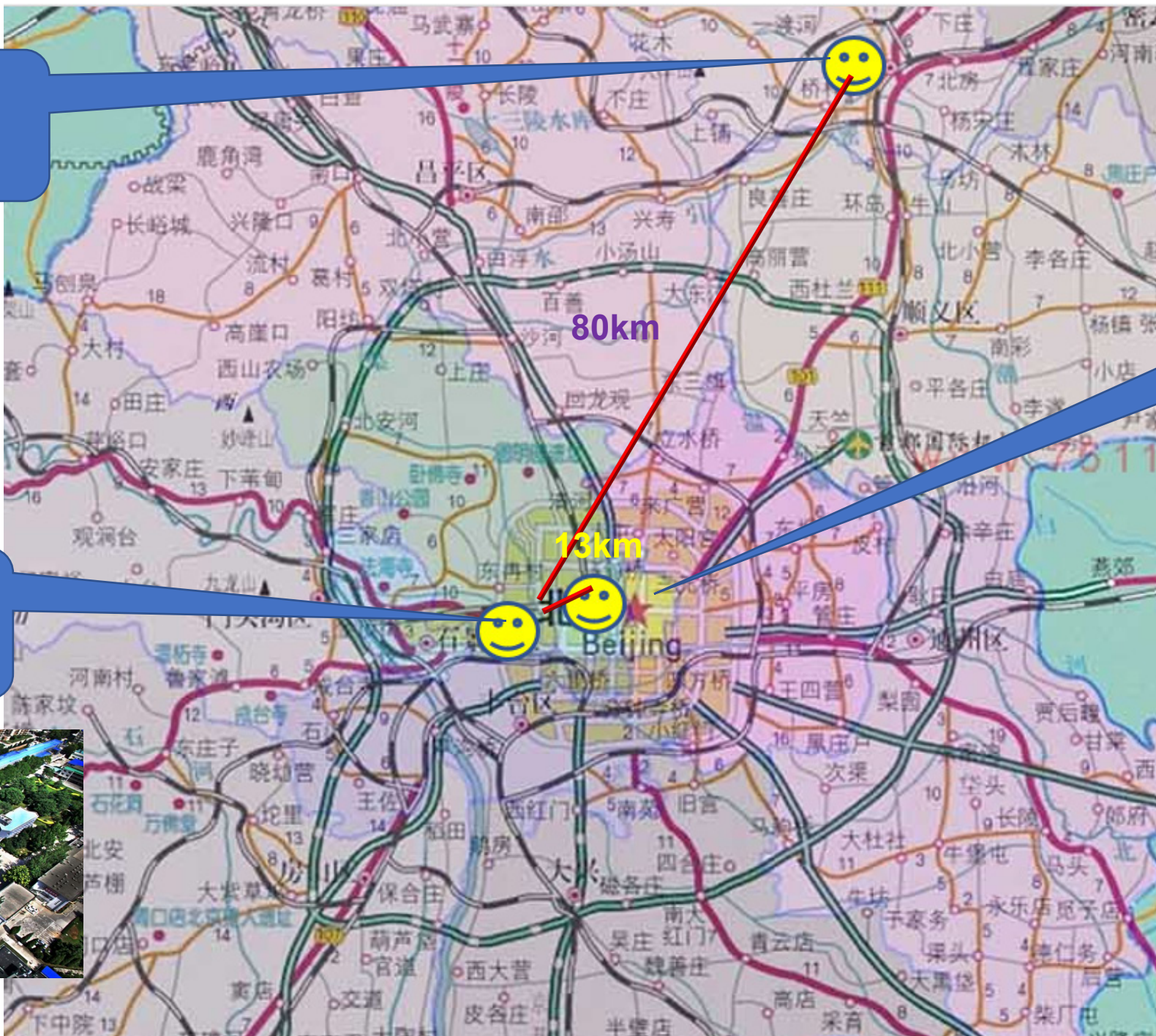
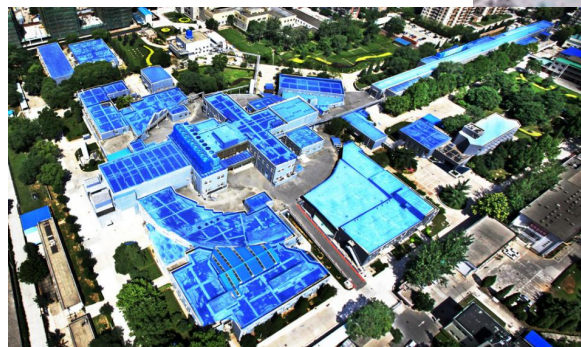
As a capital of Dynasties, Beijing has a history of 1100 years.



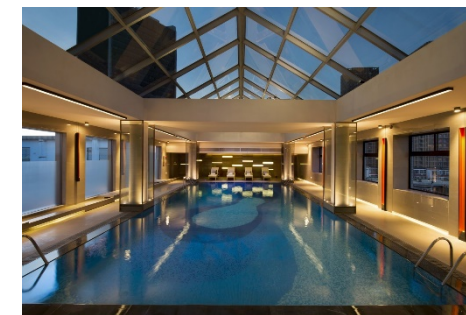
IHEP HEPS campus



IHEP BEPCII campus



**Conference cite:
Friendship hotel**



Many hotels are close to the conference center, ranked from economical to five stars \$50 ~ \$200

北京地铁2020年规划图

Beijing Subway Map

© Design by leeyom 感谢大家支持



北京地铁 BEIJING SUBWAY 京港地铁

- 地铁1号线 地铁13号线
- 地铁2号线 地铁14号线
- 地铁3号线 地铁15号线
- 地铁4号线 地铁16号线
- 地铁5号线 地铁17号线
- 地铁6号线 地铁18号线
- 地铁7号线 地铁19号线
- 地铁8号线 地铁昌平线
- 地铁9号线 地铁房山线
- 地铁10号线 地铁西郊线
- 地铁11号线 地铁亦庄线
- 地铁12号线 地铁平谷线
- 机场线
- 换乘车站
- 地铁高架线



City Traffic

北京全攻略





There are 2 international airports in Beijing.



**Beijing, capital of China,
lies in the north part of
China.**

Forbidden city



**Stadium for
Olympic games**



**Great wall-
border between nomadic civilization and
agricultural civilization**

Summer palace





HB2012



52nd ICFA Advanced Beam Dynamics Workshop on High-Intensity and High-Brightness Hadron Beams

September 17 - 21, 2012, Beijing, China

Hosted by Institute of High Energy Physics,
Chinese Academy of Sciences

Main Topics

- Beam dynamics in high-intensity circular machines
- Beam dynamics in high-intensity linacs
- Accelerator system design, injection, extraction, beam-material interaction
- Commissioning, operations and performance
- Beam diagnostics and instrumentation for high-intensity beams

Plenary speakers

S.N. Fu (IHEP), I. Hofmann (GSI), O. Kester (GSI),
V. Lebedev (FNAL), M. Plum (ORNL), R. Schmidt (CERN),
K. Yamamoto (J-PARC), Y. Yamazaki (MSU)

Deadlines

Abstract deadline: June 17, 2012

Early registration deadline: June 7, 2012

Workshop venue: Park Plaza Beijing West

<http://hb2012.ihep.ac.cn> ♦ Contact: hb2012@ihep.ac.cn ♦ Chairmen: Jiuqing Wang, Jingyu Tang



LINAC18 29th Linear Accelerator Conference

September 16-21, 2018, Friendship Hotel, Beijing, China

Hosted by IHEP



MEDSI 2023 Beijing

The 12th International Conference on Mechanical
Engineering Design of Synchrotron Radiation
Equipment and Instrumentation

November 06 - 10, 2023 · Beijing, China

HOST: IHEP

Welcome you to IBIC2024!

Welcome you to China!