

ENTRY NO. CU50 Date July. 2/92
 Cyclotron Model Cyclone 30
 Institution Nihon Medi-Physics Co., Ltd. Hyogo Facility
 Address 9-1, Techno. Park, Sanda City, Hyogo Pref. Japan
 Tel (0795)68-4771 Telex
 Fax (0795)68-3071 EMAIL
 In Charge: Y. Mori Reported by: Y. Mori

HISTORY

MILESTONE DATES:
 Installation May 90 - Dec. 90 First Beam August 90
 DESIGN/CONSTRUCTION BY: Ion Beam Applications
 COST: Accelerator Facility \$100M
 FUNDED BY: Own company

STATUS

STAFF: Operators 10 Technicians 5
 BUDGET: Machine Funded by
 TIME DISTRIBUTION: (e.g. basic research, isotope production, maintenance, etc.)
 (a) Isotope Production 85 %
 (b) Maintenance 10 %
 (c) Development 5 %
 (d) %
 (e) %

CHARACTERISTIC BEAMS

Accelerated Ions	E/A (MeV/u)	Current(part μ A)	
		Internal	External
(a) H^-	15-30	350 H ⁻	350P
(b)			

1991 μ A-hours on target: 4.72×10^5

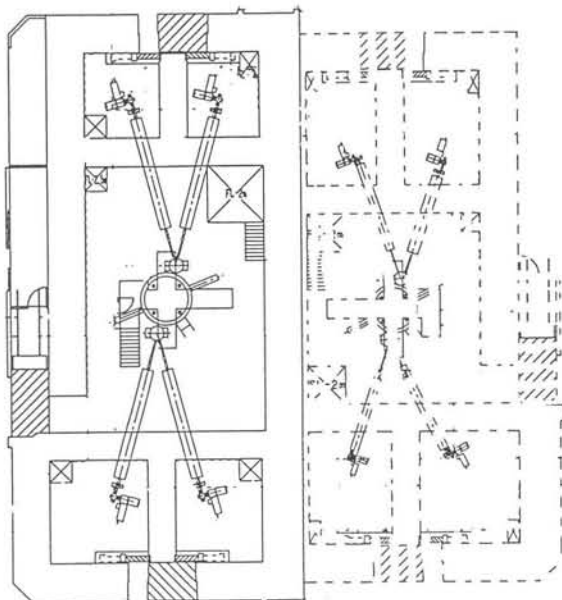
FACILITIES

SHIELDED AREA: Fixed 190 m² Moveable 2 m²
 Target Stations: 4 No. Served At Same Time: 2
 OTHER FACILITIES:
 Production Area of Radiopharmaceuticals

REFERENCES/NOTES

(a)
 (b)

PLAN VIEW OF FACILITY, COMMENTS



ENTRY NO. CU51 Date July. 2/92
 Cyclotron Model Cyclone 30
 Institution Nihon Medi-Physics Co., Ltd. Hyogo Facility
 Address 9-1, Techno. Park, Sanda City, Hyogo Pref. Japan
 Tel (0795)68-4771 Telex
 Fax (0795)68-3071 EMAIL
 In Charge: Y. Mori Reported by: Y. Mori

HISTORY

MILESTONE DATES:
 Installation March 92 - Aug. 92 First Beam
 DESIGN/CONSTRUCTION BY: Ion Beam Applications
 COST: Accelerator Facility \$100M
 FUNDED BY: Own company

STATUS

STAFF: Operators Technicians
 BUDGET: Machine Funded by
 TIME DISTRIBUTION: (e.g. basic research, isotope production, maintenance, etc.)
 (a) %
 (b) %
 (c) %
 (d) %
 (e) %

CHARACTERISTIC BEAMS

Accelerated Ions	E/A (MeV/u)	Current(part μ A)	
		Internal	External
(a) H^-	15-30	350 H ⁻	350P
(b)			

1991 μ A-hours on target:

FACILITIES

SHIELDED AREA: Fixed 170 m² Moveable 2 m²
 Target Stations: 4 No. Served At Same Time: 2
 OTHER FACILITIES:
 Production Area of Radiopharmaceuticals

REFERENCES/NOTES

(a)
 (b)

PLAN VIEW OF FACILITY, COMMENTS

