

ENTRY NO. ....CU35..... Date 22/06/1992.....  
 Cyclotron Model MC.17.F.....  
 Institution ISTITUTO NAZIONALE DEI TUMORI - DIV. MED. NUCL.....  
 Address V. VENEZIAN,1 - 20133 MILANO - ITALY.....  
 Tel (02) 2390220..... Telex (02) 339290 TUMIST I.....  
 Fax (02) 2367874..... EMAIL.....  
 In Charge: PROF. G.L. BURAGGI Reported by: G.L. BURAGGI.....

**HISTORY**

MILESTONE DATES:  
 Installation APRIL 92-JUNE 93 First Beam .....  
 DESIGN/CONSTRUCTION BY: SCANDITRONIX.....  
 COST: Accelerator \$2,180,000..... Facility \$5,820,000.....  
 FUNDED BY: NATIONAL HEALTH SERVICE - LOCAL COMMITTEE OF CONTROL (REGIONE LOMBARDIA)

**STATUS**

STAFF: Operators 1..... Technicians 1.....  
 BUDGET: Machine..... Funded by.....  
 TIME DISTRIBUTION: (e.g. basic research, isotope production, maintenance, etc.)  
 (a) ISOTOPE PRODUCTION..... 80 %  
 (b) MAINTENANCE..... 20 %  
 (c)..... %  
 (d)..... %  
 (e)..... %

**CHARACTERISTIC BEAMS**

Accelerated Ions	E/A (MeV/u)	Current(part $\mu$ A)	
		Internal	External
(a) $H^+$	17.2	100	65
(b) $D^+$	8.6	100	65

1991  $\mu$ A-hours on target: .....

**FACILITIES**

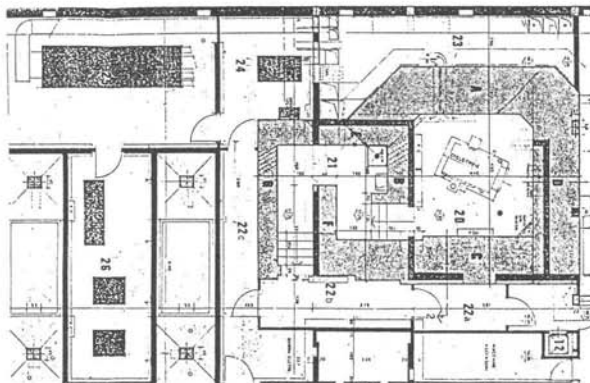
SHIELDED AREA: Fixed 35.4..... m<sup>2</sup> Moveable ..... m<sup>2</sup>  
 Target Stations: 8..... No. Served At Same Time: 4.....  
 OTHER FACILITIES: .....

**REFERENCES/NOTES**

(a).....  
 (b).....

**PLAN VIEW OF FACILITY, COMMENTS**

CYCLOTRON AND TARGETS, BOTH PLACED IN A BUNKER, ARE AT B3. LABORATORIES AND PET-CAMERA ARE AT B2.



ENTRY NO. ....CU36..... Date 25/6/92.....  
 Cyclotron Model SCANDITRONIX MC17.....  
 Institution FONDAZIONE SENATORE PASCALE.....  
 Address VIA MARIANO SEMMOLA NAPOLI.....  
 Tel 081-5452455..... Telex.....  
 Fax 081-5461688..... EMAIL.....  
 In Charge:..... Reported by:.....

**HISTORY**

MILESTONE DATES:  
 Installation .....1991..... First Beam ...1991...MAY...  
 DESIGN/CONSTRUCTION BY: SCANDITRONIX.....  
 COST: Accelerator..... Facility 600,000.\$.....  
 FUNDED BY: MEDICAL SCHOOL AND FONDAZIONE PASCALE

**STATUS**

STAFF: Operators .....3..... Technicians .....1.....  
 BUDGET: Machine..... Funded by PASCALE.....  
 TIME DISTRIBUTION: (e.g. basic research, isotope production, maintenance, etc.)  
 (a) ISOTOPE PRODUCTION..... 80 %  
 (b) MAINTENANCE..... 20 %  
 (c)..... %  
 (d)..... %  
 (e)..... %

**CHARACTERISTIC BEAMS**

Accelerated Ions	E/A (MeV/u)	Current(part $\mu$ A)	
		Internal	External
(a) PROTONS	17	23	21
(b) DEUTERONS	8.5	40	30

1991  $\mu$ A-hours on target: ..... 300 (INSTALLATION) .....

**FACILITIES**

SHIELDED AREA: Fixed ...35..... m<sup>2</sup> Moveable ...../..... m<sup>2</sup>  
 Target Stations: ...8... No. Served At Same Time: ...1.....  
 OTHER FACILITIES: RADIOISOTOPES AUTOMATIC.....  
 TRANSPORTATION TO HOT CELLS.....  
 AUTOMATIC SYNTHESIS BY MEANS OF ROBOT.....

**REFERENCES/NOTES**

(a).....  
 (b).....

**PLAN VIEW OF FACILITY, COMMENTS**