

ENTRY NO.CU35..... Date 22/06/1992.....
 Cyclotron Model MC.17.F.....
 Institution ISTITUTO NAZIONALE DEI TUMORI - DIV. MED. NUCL.....
 Address V. VENEZIAN,1 - 20133 MILANO - ITALY.....
 Tel (02) 2390220..... Telex (02) 339290 TUMIST I.....
 Fax (02) 2367874..... EMAIL.....
 In Charge: PROF. G.L. BURAGGI Reported by: G.L. BURAGGI.....

HISTORY

MILESTONE DATES:
 Installation APRIL 92-JUNE 93 First Beam
 DESIGN/CONSTRUCTION BY: SCANDITRONIX.....
 COST: Accelerator \$2,180,000..... Facility \$5,820,000.....
 FUNDED BY: NATIONAL HEALTH SERVICE - LOCAL COMMITTEE OF CONTROL (REGIONE LOMBARDIA)

STATUS

STAFF: Operators 1..... Technicians 1.....
 BUDGET: Machine..... Funded by.....
 TIME DISTRIBUTION: (e.g. basic research, isotope production, maintenance, etc.)
 (a) ISOTOPE PRODUCTION..... 80 %
 (b) MAINTENANCE..... 20 %
 (c)..... %
 (d)..... %
 (e)..... %

CHARACTERISTIC BEAMS

Accelerated Ions	E/A (MeV/u)	Current(part μ A)	
		Internal	External
(a) H^+	17.2	100	65
(b) D^+	8.6	100	65

1991 μ A-hours on target:

FACILITIES

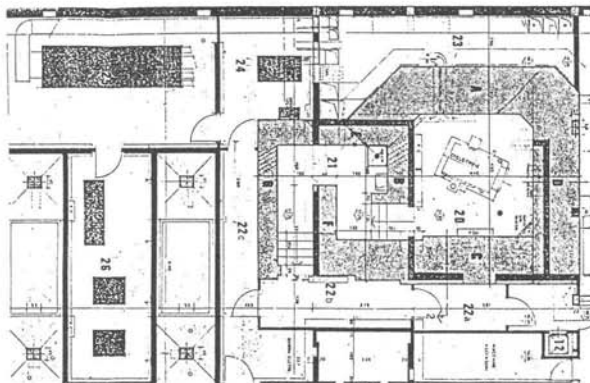
SHIELDED AREA: Fixed 35.4..... m² Moveable m²
 Target Stations: 8..... No. Served At Same Time: 4.....
 OTHER FACILITIES:

REFERENCES/NOTES

(a).....
 (b).....

PLAN VIEW OF FACILITY, COMMENTS

CYCLOTRON AND TARGETS, BOTH PLACED IN A BUNKER, ARE AT B3. LABORATORIES AND PET-CAMERA ARE AT B2.



ENTRY NO.CU36..... Date 25/6/92.....
 Cyclotron Model SCANDITRONIX MC17.....
 Institution FONDAZIONE SENATORE PASCALE.....
 Address VIA MARIANO SEMMOLA NAPOLI.....
 Tel 081-5452455..... Telex.....
 Fax 081-5461688..... EMAIL.....
 In Charge:..... Reported by:.....

HISTORY

MILESTONE DATES:
 Installation1991..... First Beam ...1991...MAY...
 DESIGN/CONSTRUCTION BY: SCANDITRONIX.....
 COST: Accelerator..... Facility 600,000.\$.....
 FUNDED BY: MEDICAL SCHOOL AND FONDAZIONE PASCALE

STATUS

STAFF: Operators3..... Technicians1.....
 BUDGET: Machine..... Funded by PASCALE.....
 TIME DISTRIBUTION: (e.g. basic research, isotope production, maintenance, etc.)
 (a) ISOTOPE PRODUCTION..... 80 %
 (b) MAINTENANCE..... 20 %
 (c)..... %
 (d)..... %
 (e)..... %

CHARACTERISTIC BEAMS

Accelerated Ions	E/A (MeV/u)	Current(part μ A)	
		Internal	External
(a) PROTONS	17	23	21
(b) DEUTERONS	8.5	40	30

1991 μ A-hours on target: 300 (INSTALLATION)

FACILITIES

SHIELDED AREA: Fixed ...35..... m² Moveable/..... m²
 Target Stations: ...8... No. Served At Same Time: ...1.....
 OTHER FACILITIES: RADIOISOTOPES AUTOMATIC.....
 TRANSPORTATION TO HOT CELLS.....
 AUTOMATIC SYNTHESIS BY MEANS OF ROBOT.....

REFERENCES/NOTES

(a).....
 (b).....

PLAN VIEW OF FACILITY, COMMENTS