

ENTRY NO. CU108 Date
 Cyclotron Model RDS 11 MeV Siemens
 Institution USC / SYNCOR
 Address 2250 Alcazar St., Los Angeles CA 90033
 Tel 213 225 0195 Telex
 Fax 213 225 0198 EMAIL
 In Charge: Ben Trickey Reported by: Gerald Kuhs
 /Diana Tribbey

HISTORY

MILESTONE DATES:

Installation ..Sept..91..... First BeamJan..92....
 DESIGN/CONSTRUCTION BY: Laffin-Lietz Architect, Kemp
 COST: Accelerator Facility
 FUNDED BY:USC./ SYNCOR.....

STATUS

STAFF: Operators2..... Technicians1.....
 BUDGET: Machine Funded by ..SYNCOR.....
 TIME DISTRIBUTION: (e.g. basic research, isotope production, maintenance, etc.)
 (a) ...PET clinical.....90... %
 (b) ...PET research.....10... %
 (c) %
 (d) %
 (e) %

CHARACTERISTIC BEAMS

Accelerated Ions	E/A (MeV/u)	Current(part μ A)	
		Internal	External
(a) ...H ⁺	11 MeV.....		
(b)			

1991 μ A-hours on target:

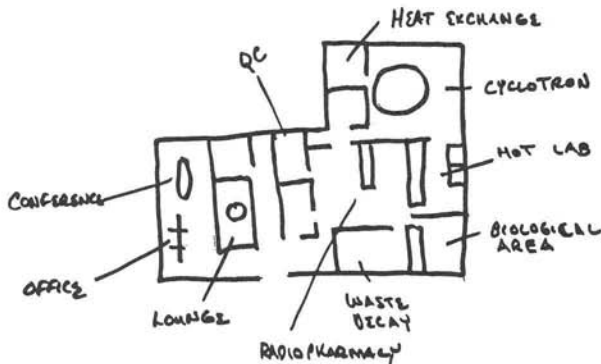
FACILITIES SELFSHIELDED

SHIELDED AREA: Fixed m² Moveable m²
 Target Stations:4 No. Served At Same Time: ...2.....
 OTHER FACILITIES:
 On Site Radiopharmacy.....
 Regional Distribution Center.....

REFERENCES/NOTES

(a)
 (b)

PLAN VIEW OF FACILITY, COMMENTS



ENTRY NO. CU109 Date 9/8/92
 Cyclotron Model GTI RDS, Fa. I. (first one)
 Institution University of Wisconsin
 Address 1530 Medical Science Center, 1300 Univ. Ave. Madison
 Tel 608 262 2170 Telex
 Fax 608 262 2413 EMAIL
 In Charge: R.J. Moddes Reported by: R.J. Moddes

HISTORY

MILESTONE DATES:

Installation May.1986..... First Beam 18.days.after.arr.
 DESIGN/CONSTRUCTION BY: CTI, Inc.....
 COST: Accelerator \$499,322..... Facility \$55,000.....
 FUNDED BY: Intramural Sources (UW).....

STATUS

STAFF: Operators5..... Technicians0.....
 BUDGET: Machine ...30K..... Funded byUW.....
 TIME DISTRIBUTION: (e.g. basic research, isotope production, maintenance, etc.)
 (a) ...Basic Research.....30... %
 (b) ...Isotope Production.....65... %
 (c) ...Maintenance.....<5... %
 (d) %
 (e) %

CHARACTERISTIC BEAMS

Accelerated Ions	E/A (MeV/u)	Current(part μ A)	
		Internal	External
(a) ...protons.....	11.6.....	<60.....	<50.....
(b)			

1991 μ A-hours on target: 1400 hours since 1986/300 hrs in 91

FACILITIES

SHIELDED AREA: Fixed 400 m² Moveable m²
 Target Stations:4 No. Served At Same Time: ...2.....
 OTHER FACILITIES: vertical switching magnet for a downward directed beam for molten targets, 12 interchangeable targets, mach detector development.....

REFERENCES/NOTES

(a)
 (b)

PLAN VIEW OF FACILITY, COMMENTS