

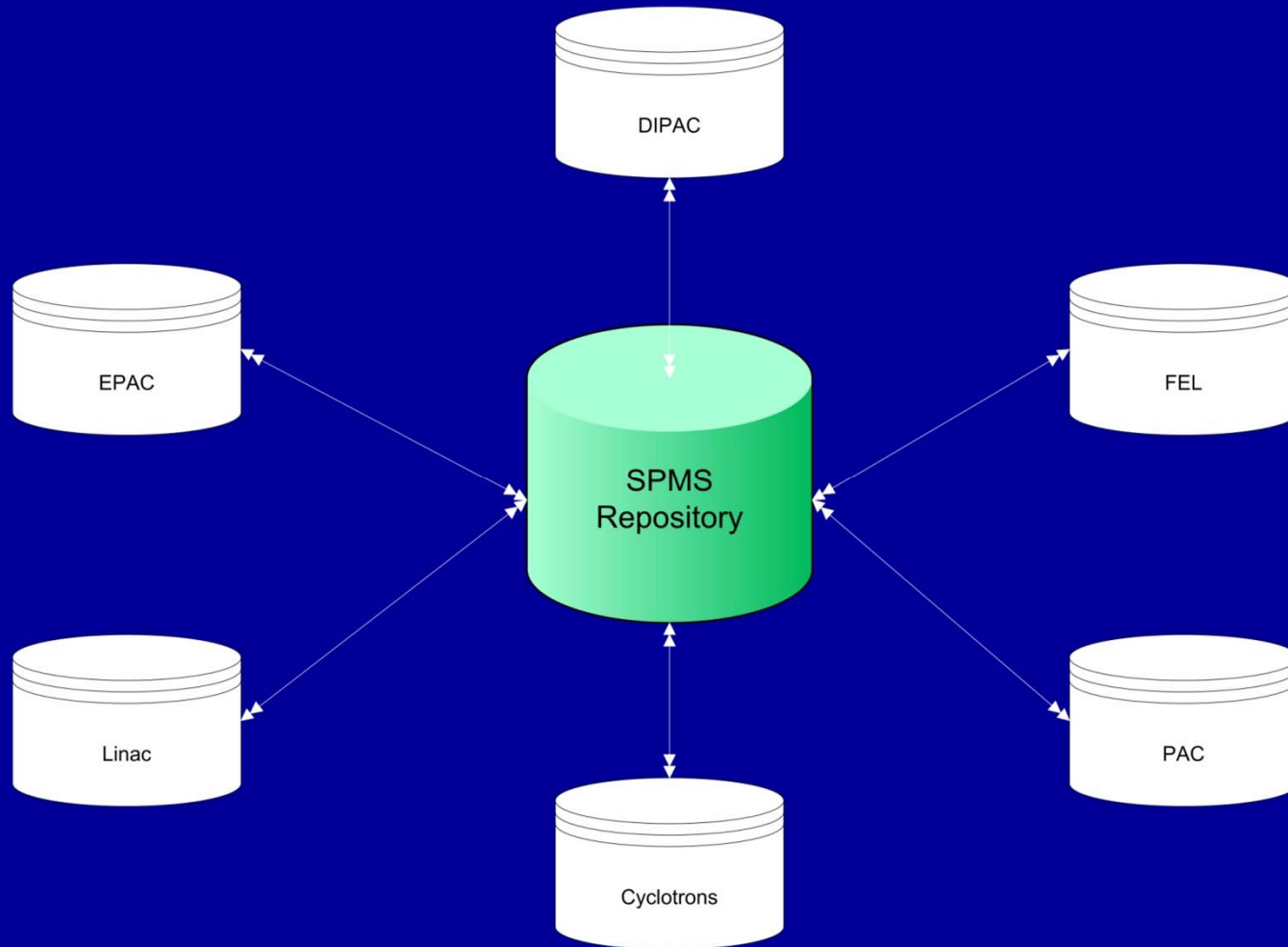
# Overview of SPMS

Matt Arena, Fermilab

# What is SPMS?

- ▣ The Scientific Program Management System is a (GPL) tool for event management
  - Scientific Program Module
    - Scientific program development and management
    - **Submission of contributions**
    - Refereeing
    - **Editing**
  - Event Management Module
    - Delegate, Industrial Exhibition, Students etc. Registration
    - Management of payments of fees and social program
    - Management of hotel bookings and deposits
  - *Automated post-conference proceedings production*

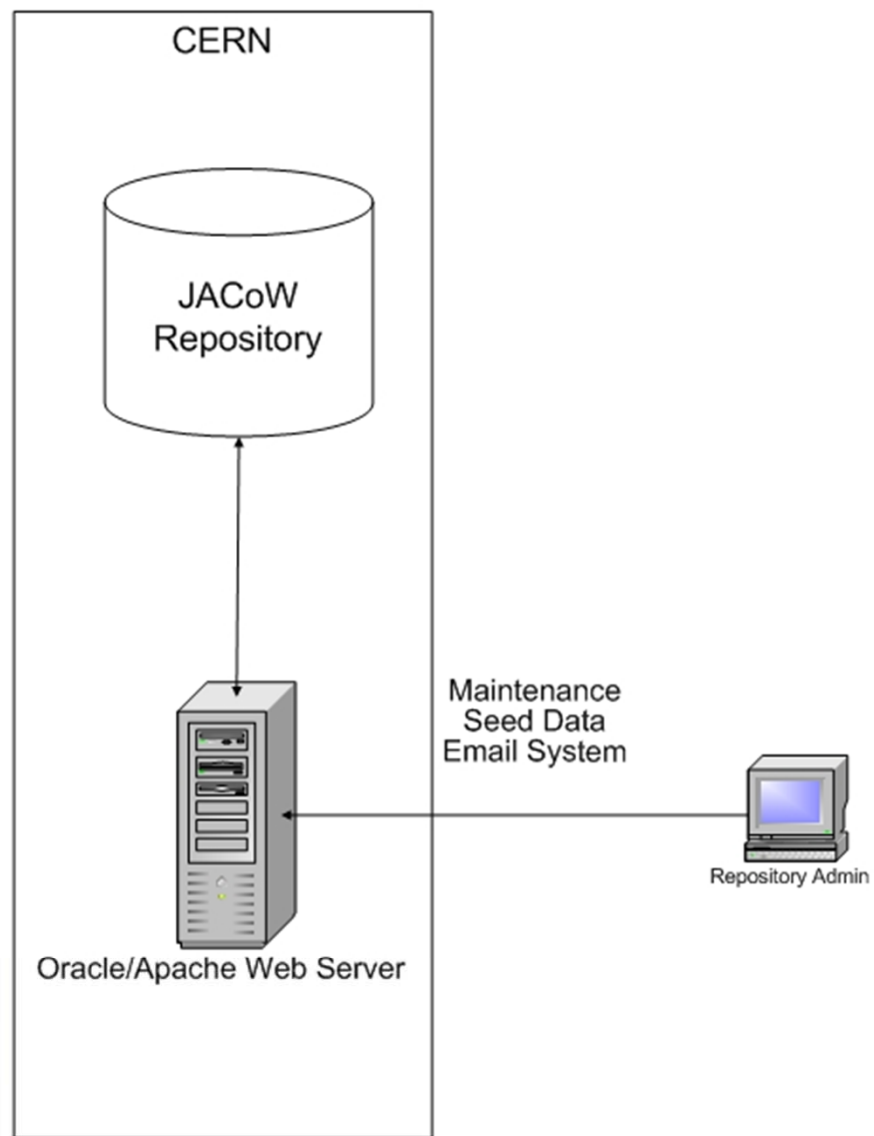
# SPMS Architecture



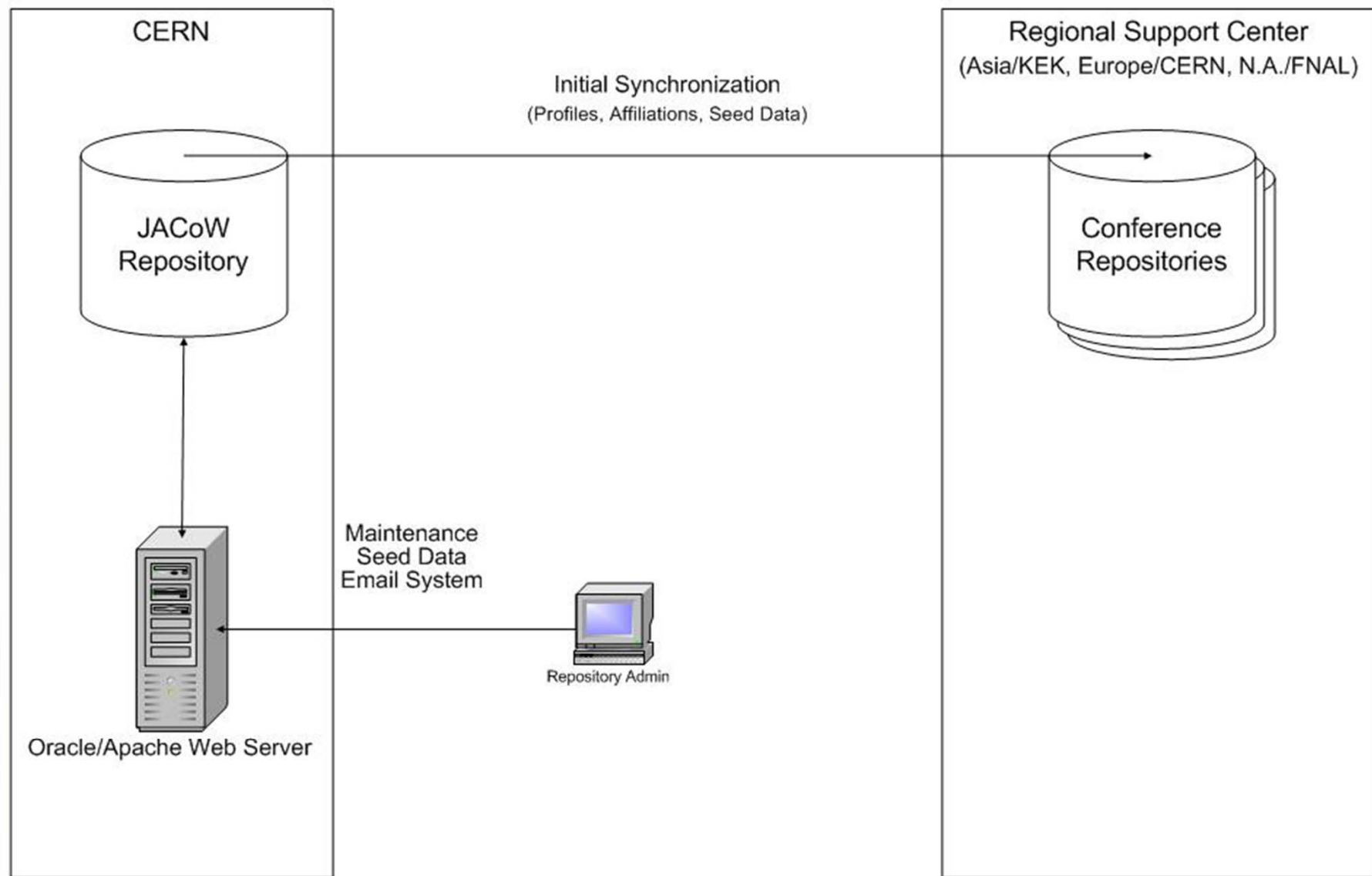
# SPMS Repository

- ▣ The strength of SPMS lies in the main repository
- ▣ One, common data store of profile data
  - Delegates, Authors, Vendors, Affiliations, etc.
- ▣ Conference profile data is continuously synced with the repository (*in the background*).
- ▣ Provides “seed” data for every conference
  - Status codes, file types, fine-grained access, etc.
- ▣ Provides consistent author indexes across all conferences

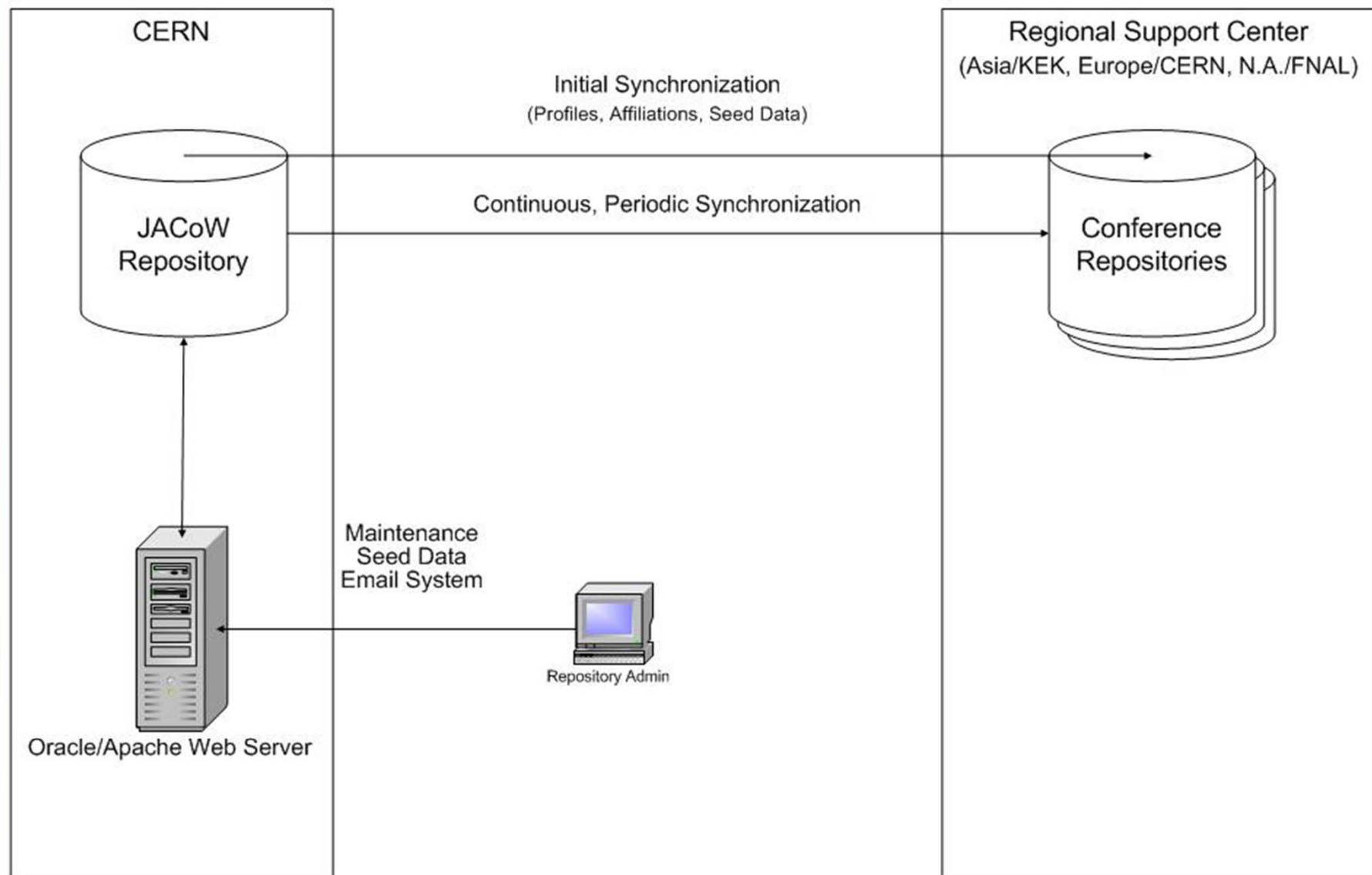
# SPMS Architecture



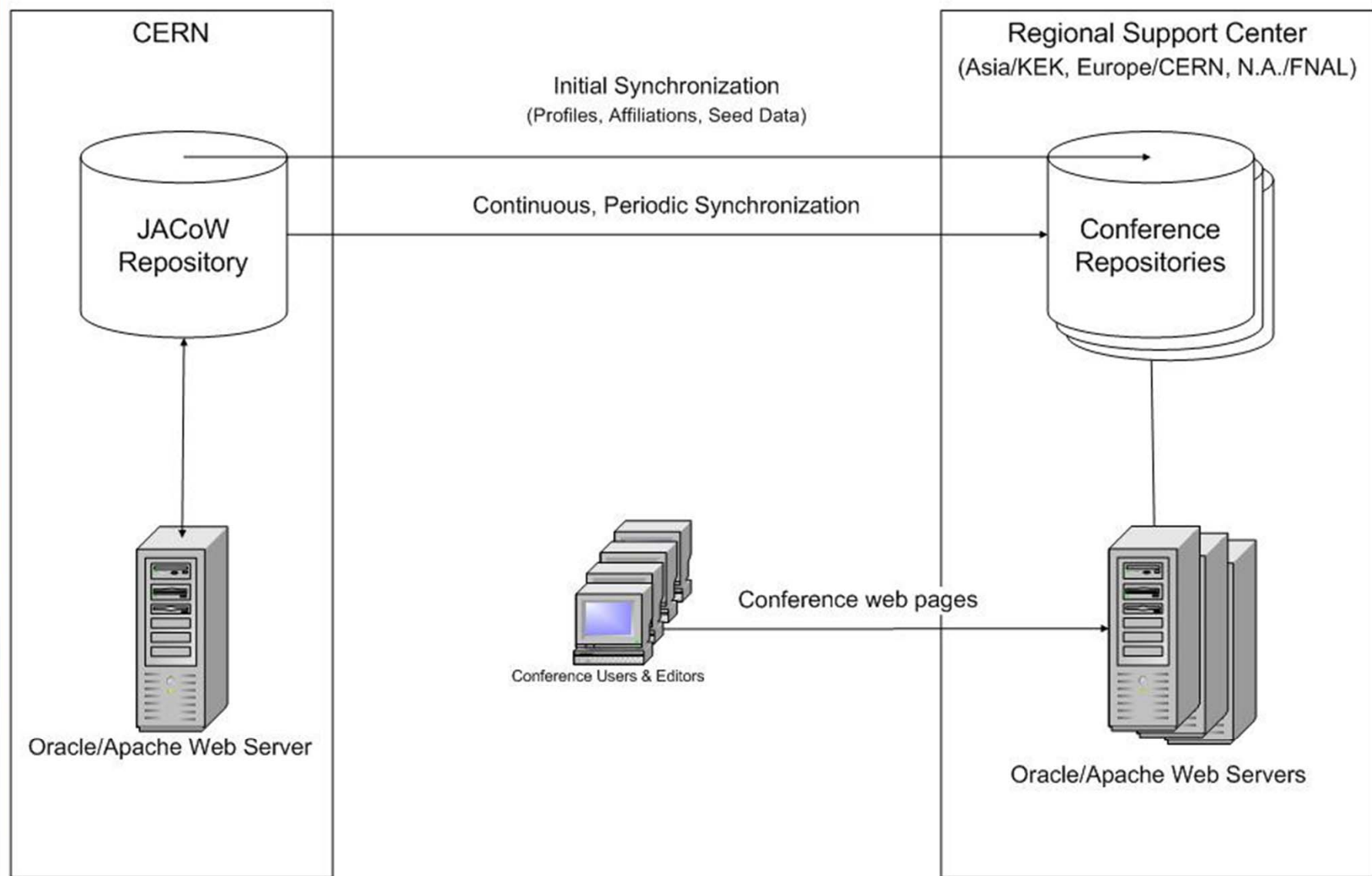
# SPMS Architecture



# SPMS Architecture

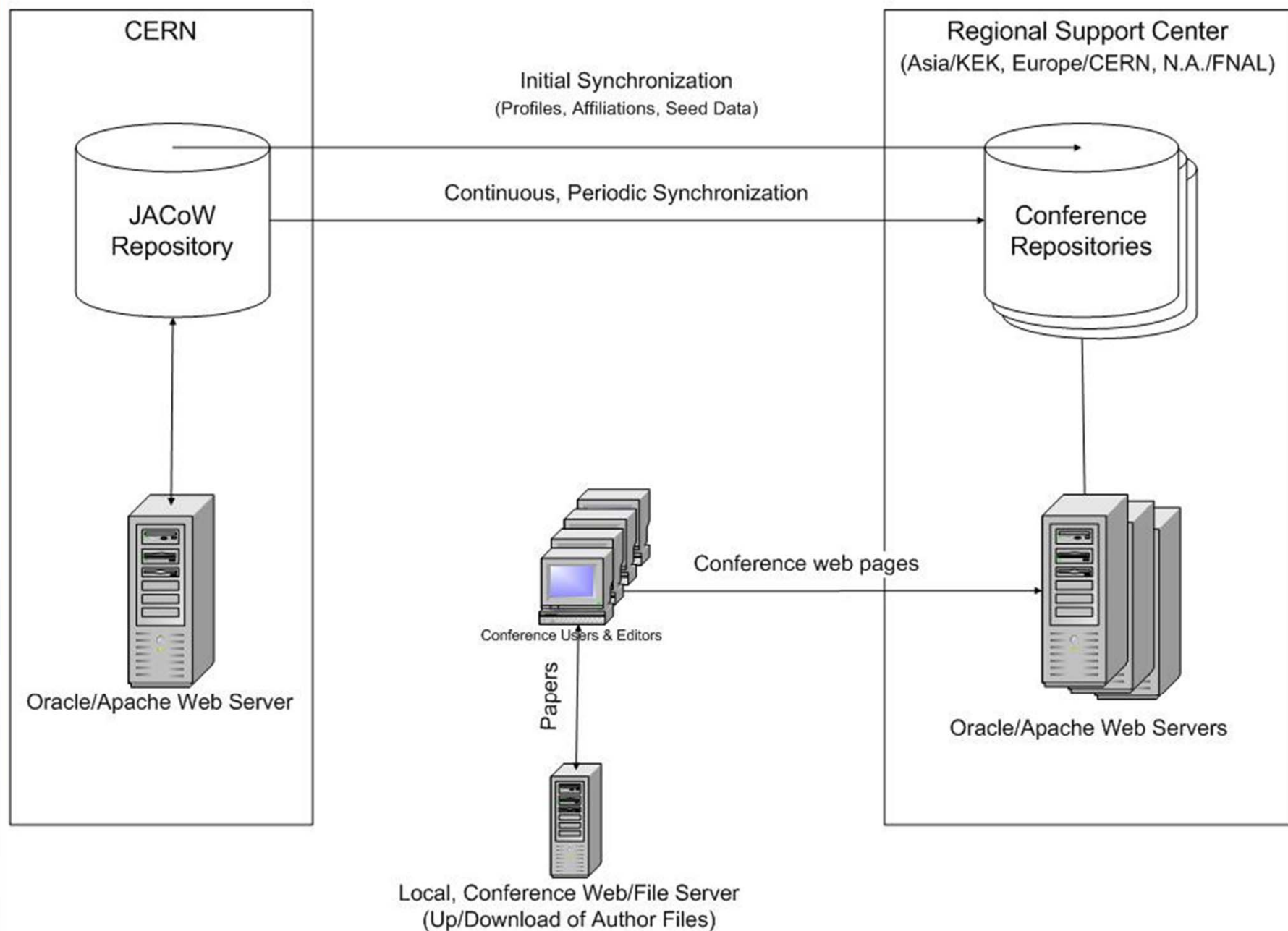


# SPMS Architecture

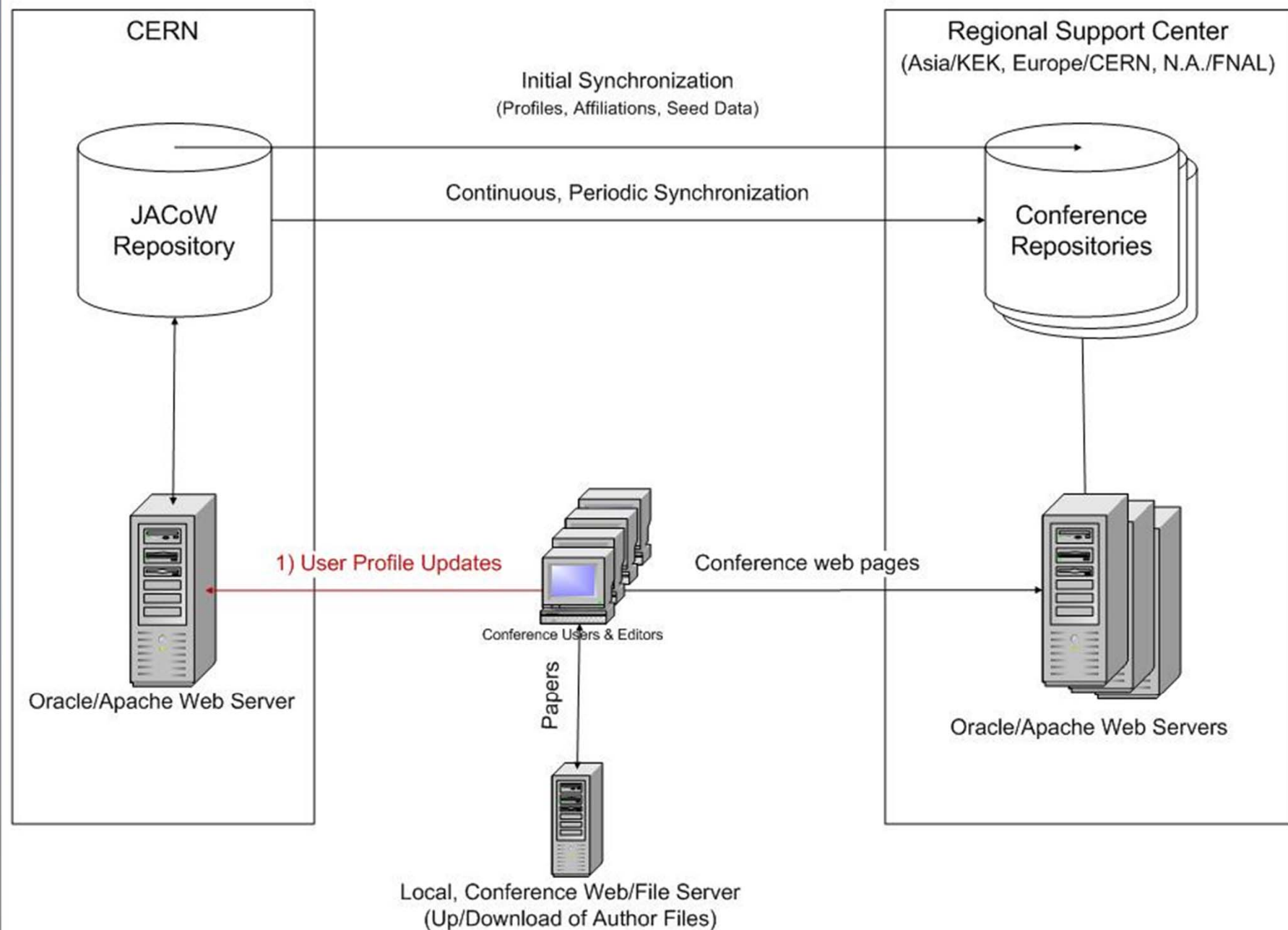




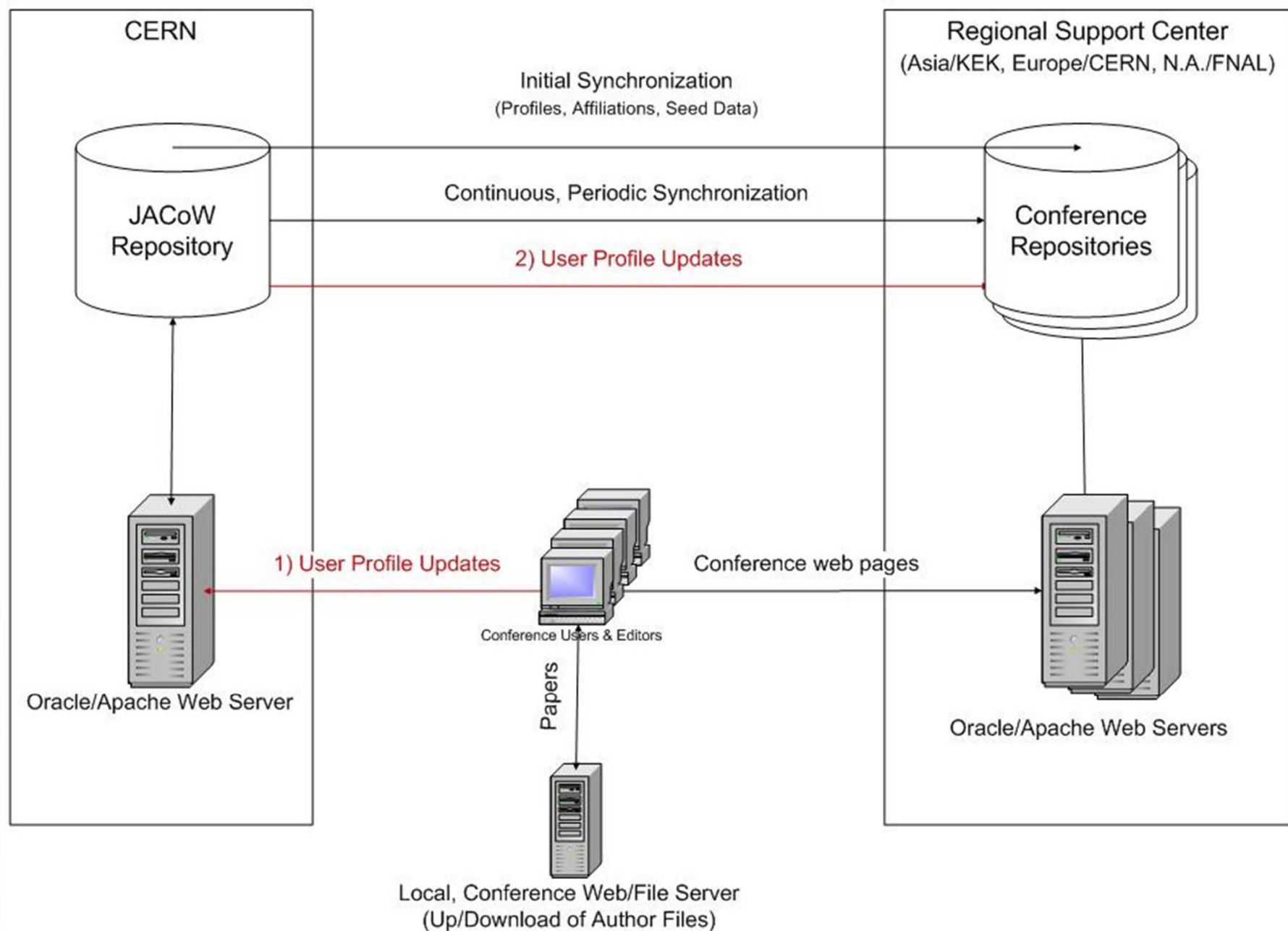
# SPMS Architecture



# SPMS Architecture



# SPMS Architecture



# Customization

- ▣ SPMS maintains numerous parameters that control functionality
- ▣ Default values are downloaded from the main repository
- ▣ The conference administrator controls all functionality, including who has access to which pages in SPMS fine-grained access

# Scientific Program Module

## ▣ Invited Oral Mode

- PC enters suggested oral presentations with speaker(s).
- PC members prioritized suggestions
- PC members finalize suggestions
- SPMS emails suggested authors/speakers

# Scientific Program Module

- ▣ Submission of Contributions
  - Optionally supports invitation-only conferences
  - Collects abstract data and authors/coauthors
  - Synchronizes new profiles with the main repository
  - Automatically organizes posters into (parallel) sessions by classification

# Scientific Program Module

## ▣ Abstract Reclassification

- PC reviews all abstracts to verify each contribution is in the correct main classification
- Option to use sub-classifications
- SPMS tracks all suggestions for reclassification
- Once reclassification is complete SPMS can freeze changes to classifications by the authors

# Scientific Program Module

- ▣ Contributed Oral Mode
  - PC reviews poster abstracts for “promotion” to contribute oral status
  - SPMS tracks all suggestions
  - SPMS can email all authors identified for contribute orals
  - Once complete, SPMS can freeze changes to presentation type by the authors

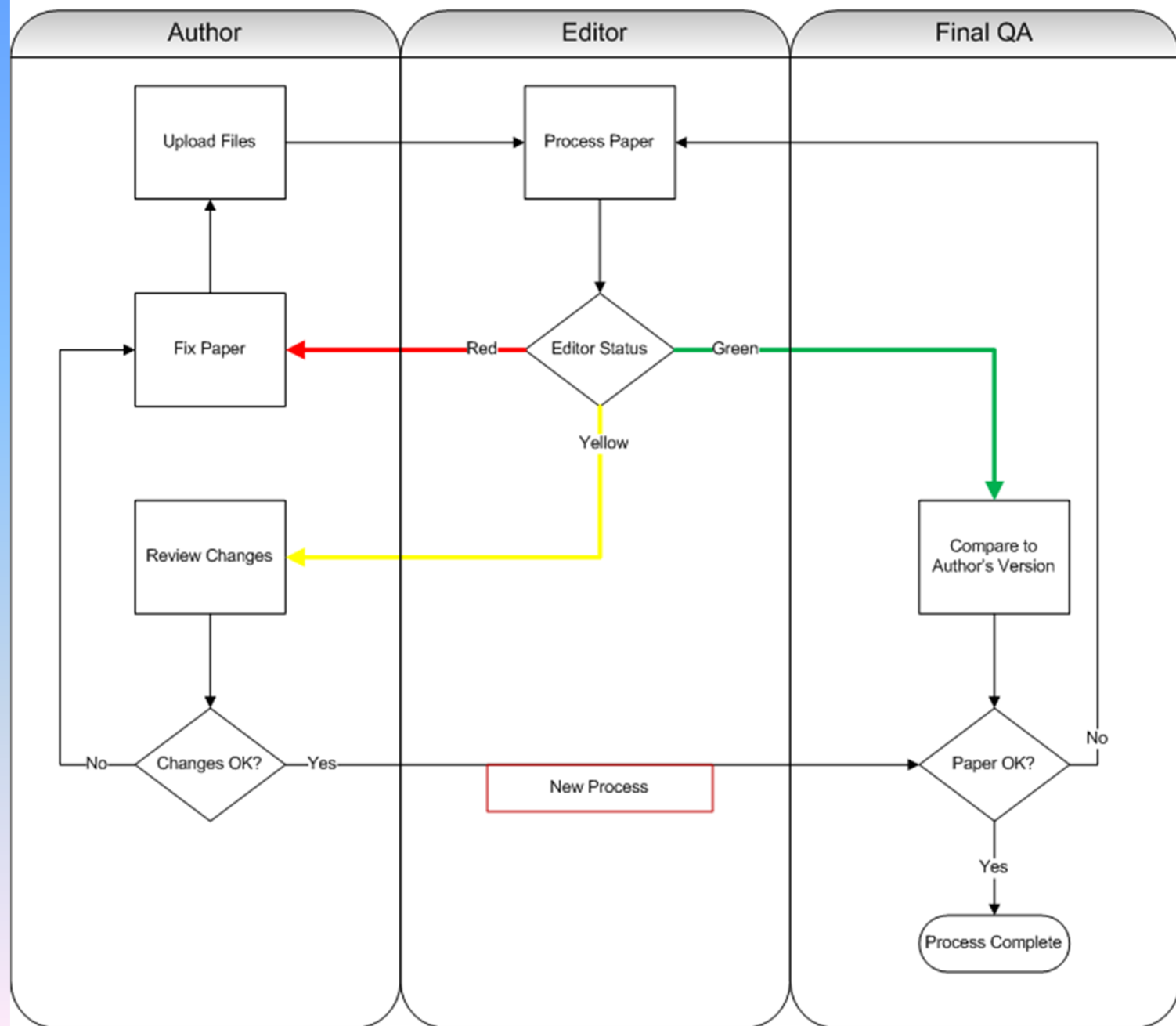


# Scientific Program Module

## ▣ Editors' Module

- Users upload electronic documents
- SPMS automatically assigns papers ready for processing
  - Based on files uploaded and/or special attributes assigned by the conference administrator
- Workflow fully automated within SPMS
- Includes a final quality assurance process
- Paper status immediately available on the electronic dot board

# SPMS Editor Workflow



# Scientific Program Module

## ▣ Referee Module

- Supports “light” refereeing
- The referee process can occur before or after the editing process
- Author re-editing controlled by the conference administrator

# Scientific Program Module

## FEL 2009 Upload Editor/Referee Status Code Matrix

Matthew Arena

[Logout](#) [Search](#) [My Schedule](#) [Home](#) [Find Profiles](#)



The Yes/No drop-down lists determine if a user may upload files based on the status of the Editor and Referee status codes. Every combination is covered in the rows and columns. Set the values of each combination then click save.

Editor Status	Referee Status				
	Not assigned	Assigned but no dot status	Dot with uploadable status	Dot with no uploadable status	Declined
Not assigned	Yes ▾	No ▾	Yes ▾	No ▾	No ▾
Assigned but no dot status	No ▾	No ▾	No ▾	No ▾	No ▾
Dot with uploadable status	Yes ▾	Yes ▾	Yes ▾	Yes ▾	No ▾
Dot with no uploadable status	No ▾	No ▾	Yes ▾	No ▾	No ▾

# Scientific Program Module

- ▣ Other features
  - Reporting – many reports
  - Data extracts
    - Internal (abstract book, indexing, all orals, etc)
    - External (BibTex, CERN-OAI, SPIRES)
  - Email utilities
  - Maintenance screens for the conference administrator

# Event Management Module

## ▣ Registration Module

- Supports multiple registrations pages – delegates, vendors, students, companions, etc
- Registration pages are fully customizable by the registration manager
  - Field definition (text, Y/N, radio, checkbox, popup)
  - Fees calculated on fields and field combinations
- Supports external credit card vendors
- Generates receipts
- Supports external registration systems

# Event Management Module

## ▣ Hotel Management

- Supports hotel bookings and deposits
- Let the delegate chose among several hotel proposals
- Different hotel classes (\*\*\*) and services (Single Room, Double, Double-Single use, ...)
- Automatic free rooms report generation for users
- Automatic Rooming Lists for hotels
- Strong PCO role for room confirmation (requested by PCOs)

# Post-conference Proceedings

- ▣ JACoW Proceedings Scripts Package (JSPS) for SPMS and InDiCo conferences
  - Fully automated and documented
  - Generates all required files for publication
  - Meets JACoW's [Technical Requirements for Publication](#)



# Summary

- ▣ SPMS is a powerful tool for event management
- ▣ The central repository is a major factor in its success
- ▣ Many features and functionality are optional
- ▣ SPMS is fully customizable but does require training and expertise
- ▣ SPMS is still growing with every conference