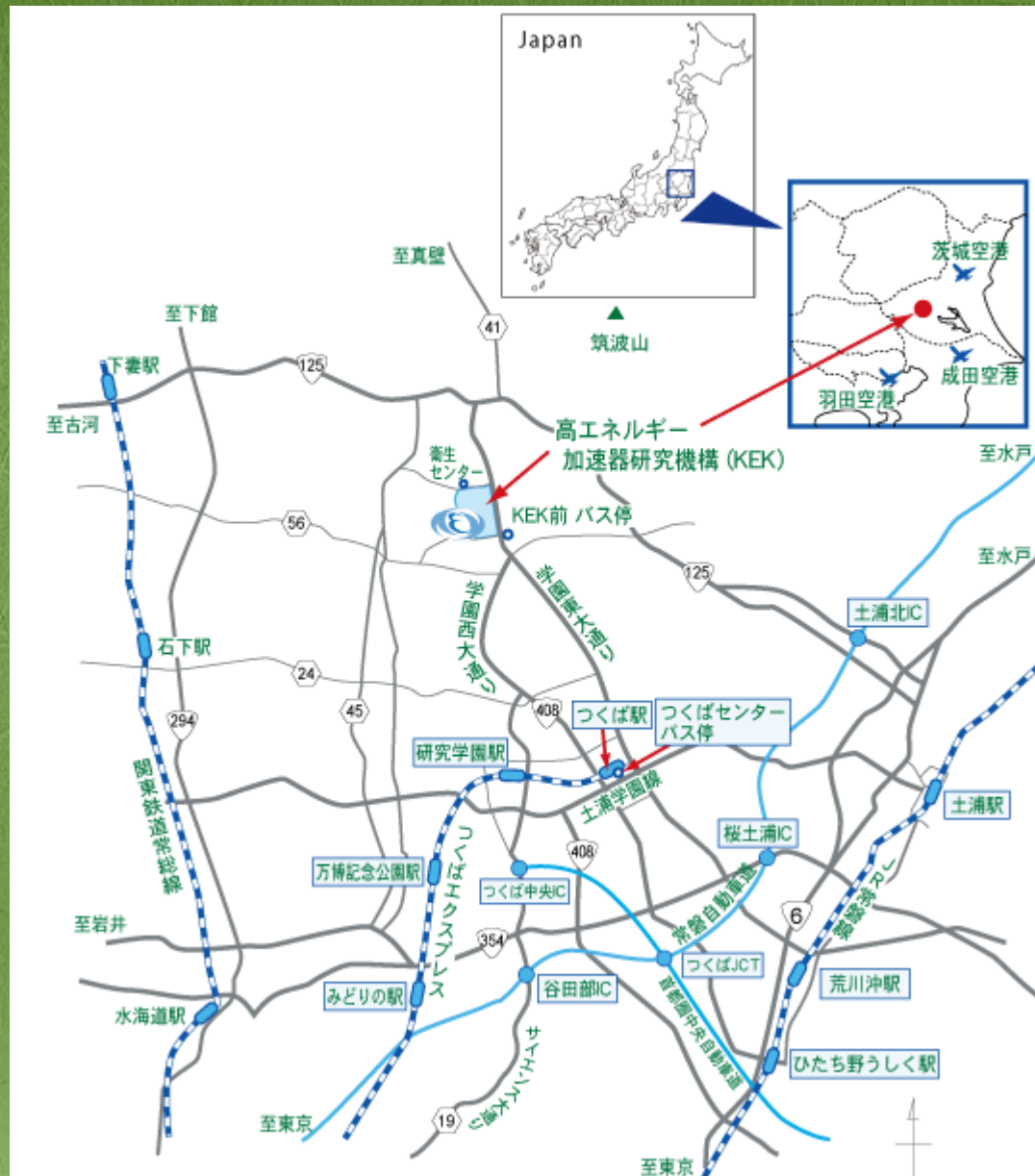


# SPMS RSC Activities in Asia

Takashi Kosuge

KEK

# KEK





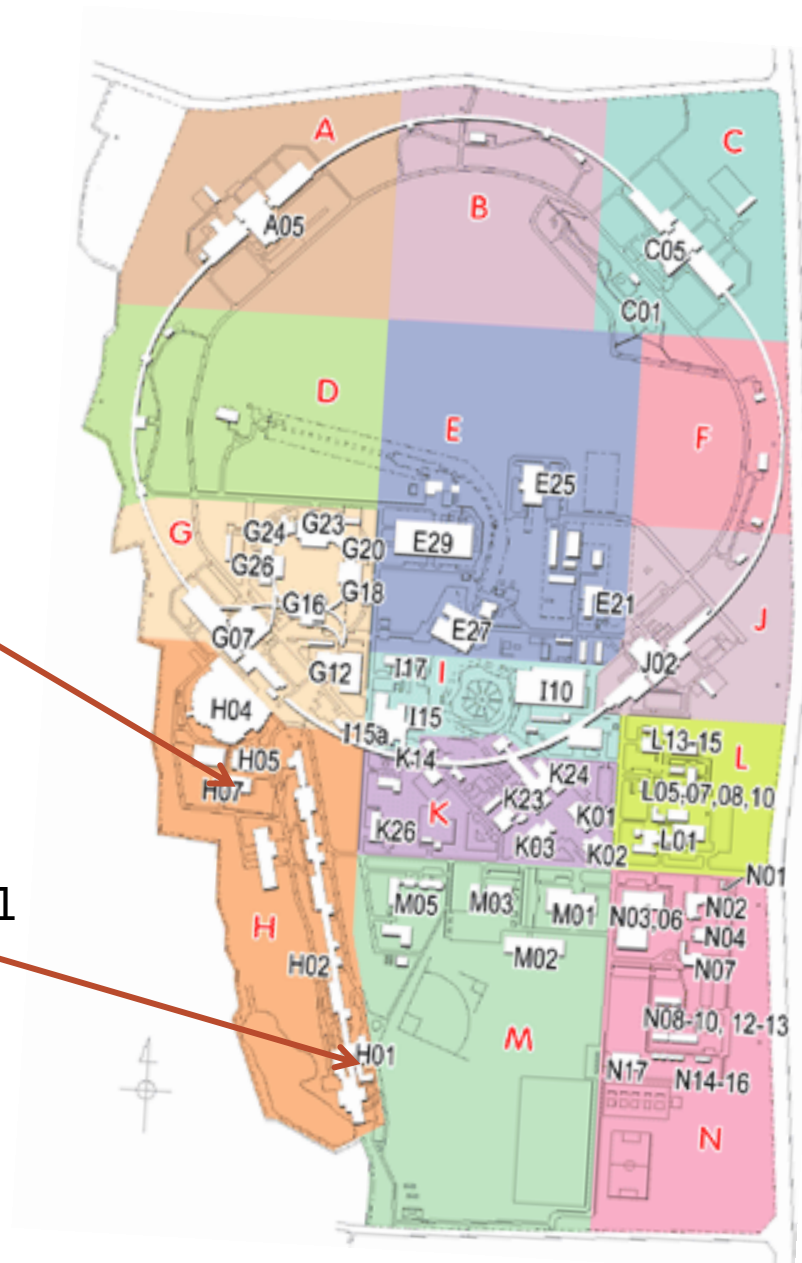






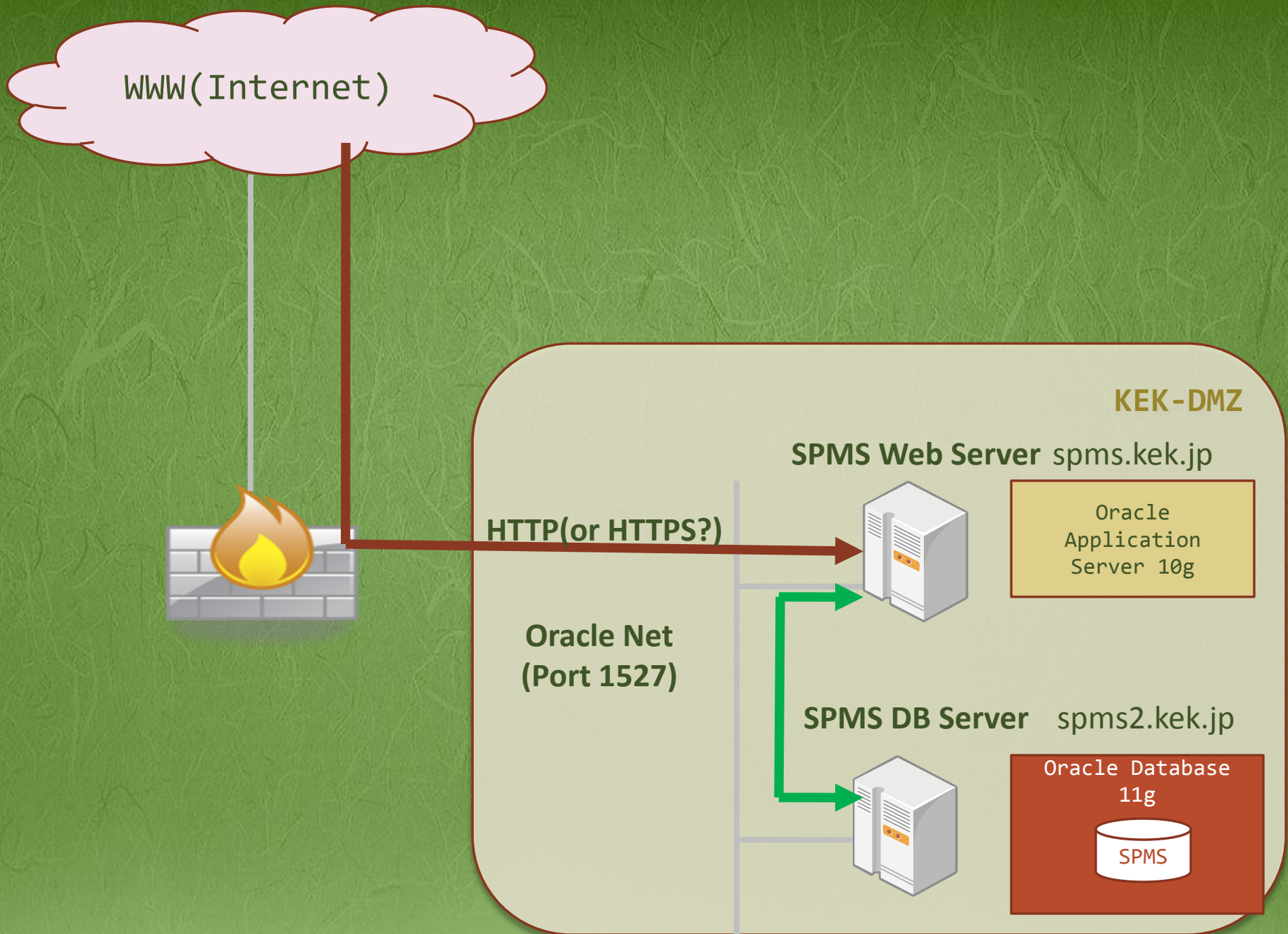
My office

Linac control











	SPMS DB Server	SPMS Web Server
OS	Windows2003 Server (64bit)	Windows2003 Server (64bit)
CPU	Core 2 Duo 2.4GHz	Core 2 Duo 2.4GHz
Memory	8 GB	8GB
HDD	500GB x 2 (RAID 1)	500GB x 2 (RAID 1)
Applicat ion	Oracle Database 11g	Application Server 10g



# Maintenance

- ▣ Backup database : every day
- ▣ Checking system log: 2days per week (East Japan Institute of Technology Co., Ltd)

# SPMS RSC in Asia

- ▣ Set up 2008
- ▣ COOL '09, Lanzhou, China
- ▣ ICALEPCS '09, Kobe, Japan



# Instances in 2010

- ▣ IPAC'10  
(23-28 May, Kyoto, Japan)
- ▣ Cyclotrons'10  
(6-10 September, Lanzou, China)
- ▣ Linac'10  
(12-17 September, Tsukuba, Japan)
- ▣ FEL'11 (Shanghai)

# Problem had been found but fixed

- ❑ CPU load of ORACLE Application Server is 100%!
- ❑ Oracle Application Server had been upgraded on 28 June.
- ❑ Works stable.



# Stoppage for maintenance

- We have to stop SPMS in KEK for 2 days every year due to KEK electric power stoppage.
- 2010, 19 to 20 August.
- The announcement will be sent by an e-mail.

August						
Su	Mo	Tu	We	Th	Fr	Sa
	1	2	3	4	5	6
7	8	9	10	11	12	13
14	15	16	17	18	19	20
21	22	23	24	25	26	27
28	29	30	31			