

Entry: CU50 **Date:** June 9, 1998
Machine Name: Cypris
Cyclotron Model: Type 370
Institution: S.H.I. Examination & Inspection, LTD.
Address: 1501 Imazaike, Toyo, Ehime-, 799-1393 JAPAN
Tel: (JAPAN)-(0)898-64-6949
Fax: (0)898-65-5997 **Web:** shiei.co.jp
E-mail: info@shiei.co.jp
In Charge: Mr. K.Nakashima

HISTORY

Installation: May, 1980 **First Beam:** Aug., 1980
Design/Construction by: Sumitomo Heavy Industries, LTD.
Funded by: Sumitomo Heavy Industries, LTD.

USES

Ion irradiation on semiconductors / 70 %
 Neutron radiography / 20 %
 Thin layer activation / 10 %
 %
 %
Total time: 220 h/year

CHARACTERISTIC BEAMS

Ions/energy/current:
 Proton : 18MeV / 50μA 5MeV / 3μA
 Deuteron / 10MeV / 10μA
 3-Helium / 24MeV / 10μA

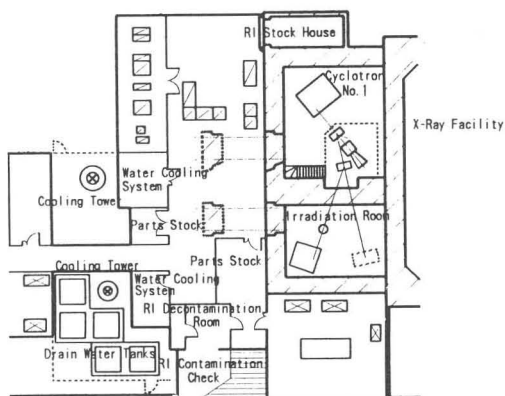
EXPERIMENTAL FACILITIES

.....

REFERENCES

.....

PLAN VIEW OF FACILITY



COMMENTS

This cyclotron has been run for commercial use.

Entry: CU51 **Date:** June 9, 1998
Machine Name:
Cyclotron Model: Type 370V
Institution: S.H.I. Examination & Inspection, LTD.
Address: 1501 Imazaike, Toyo, Ehime-, 799-1393 JAPAN
Tel: (JAPAN)-(0)898-64-6949
Fax: (0)898-65-5997 **Web:** shiei.co.jp
E-mail: info@shiei.co.jp
In Charge: Mr. K.Nakashima

HISTORY

Installation: Aug., 1996 **First Beam:** Feb., 1997
Design/Construction by: Sumitomo Heavy Industries, LTD.
Funded by: S.H.I. Examination & Inspection, LTD.

USES

Ion irradiation on semiconductors / 60 %
 Charger particle activation analysis / 15 %
 Radioisotopes production and purification / 15 %
 Positron production / 10 %
 %
 %
Total time: 100 h/year

CHARACTERISTIC BEAMS

Ions/energy/current:
 Proton : 17MeV/50μA 8MeV/20μA 4.5MeV/10μA
 2MeV / 5μA Deuteron / 9MeV / 40μA
 3-Helium / 24MeV / 10μA α / 24MeV / 5μA

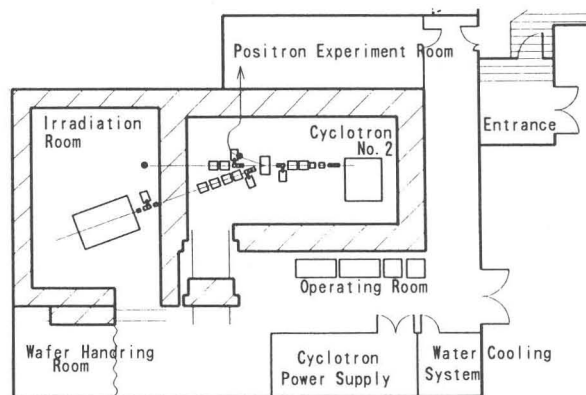
EXPERIMENTAL FACILITIES

.....

REFERENCES

.....

PLAN VIEW OF FACILITY



COMMENTS

This cyclotron has been run for commercial use.

