

Entry: **CU30** Date: **3.6.1998**
 Machine Name:
 Cyclotron Model: **MC - 35**
 Institution: **MHH, Nuclear Medicine**
 Address: **D-30625 Hannover**
 Tel: **++49/511/532-3085 or 5606**
 Fax: **-2315** Web:
 E-mail: **Helmeke.Hans-J. MH-Hannover.de**
 In Charge: **Dr. H.-J. Helmeke**

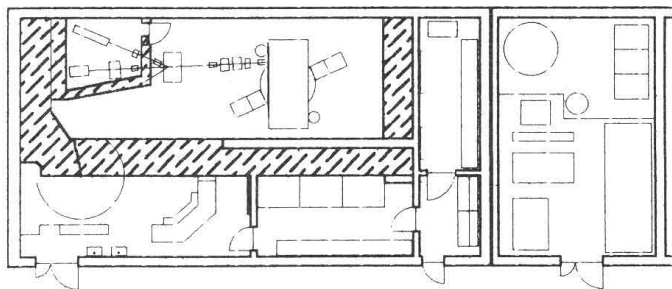
HISTORY
 Installation: **1976** First Beam: **21.1.1977**
 Design/Construction by: **Scanditronix**
 Funded by:

USES
 PET radionuclides 90 %
 other radionuclides 5 %
 research - targets 2.5 %
 research - radiochemistry 2.5 %
 Total time: on target up to 360 h/year

CHARACTERISTIC BEAMS
 Ions/energy/current:
 protons/7.5 - 35/65
 deuterons/3.8 - 18/65
 He-4/7.5 - 35/30 He-3/5.6 - 47/30

EXPERIMENTAL FACILITIES
 solid target system

REFERENCES
 H.-J. Helmeke et al
 Home made routinely used targets for the
 production of PET radionuclides
 7th WTTTC, Heidelberg, 1977
PLAN VIEW OF FACILITY



COMMENTS

ENTRY NO. CU31 Date
 Cyclotron Model **BC 1710**
 Institution **Institut für Nuklearchemie, KFA Jülich**
 Address **KFA Jülich, D-52425 Jülich, Germany**
 Tel **+49.2461.61.4141** Telex **833556 KFA D**
 Fax **+49.2461.61.2535**
 In Charge: **Dr. S.M. Qaim** Reported by: **Dr. S.M. Qaim**
 E-MAIL: **1CH107 ZAM001.ZAM KFA-JUELICH.de**

HISTORY
MILESTONE DATES:
 Installation **January 1987** First Beam **April 1987**
 DESIGN/CONSTRUCTION BY: **Japan Steel Works**
 COST: Accelerator Facility
 FUNDED BY: **KFA Jülich**

STATUS
 STAFF: Operators **2** Technicians
 BUDGET: Machine Funded by **KFA Jülich**
 TIME DISTRIBUTION: (e.g. basic research, isotope production, maintenance, etc.)
 (a) **Isotope production** 100 %
 (b) %
 (c) %
 (d) %
 (e) %

CHARACTERISTIC BEAMS

Accelerated Ions	E/A (MeV/u)	Current (part µA)	
		Internal	External
(a) p	17	/	40
(b) d	10	/	30

1994 µA-hours on target: **7820**

FACILITIES
 SHIELDED AREA: Fixed: **ca. 60** m² Moveable m²
 Target Stations: **1** No. Served At Same Time: **1**
OTHER FACILITIES:
 Hot cells, radiochemistry laboratories, automated
 radiopharmaceutical production units

REFERENCES/NOTES
 (a) Production of PET radiopharmaceuticals
 (b)

PLAN VIEW OF FACILITY, COMMENTS