

ENTRY NO. **CU120** Date .....

Cyclotron Model CTI RDS 112 .....

Institution The Methodist Medical Center of Illinois .....

Address Peoria, IL, USA .....

Tel (309) 671-2738 .....

Fax (309) 671-5185 .....

In Charge: S. Zigler .....

**HISTORY**

MILESTONE DATES:

Installation Dec 1990 .....

First Beam Jan-Feb 1991 .....

DESIGN/CONSTRUCTION BY: Phillip Swager Assoc. ....

COST: Accelerator .....

Facility .....

FUNDED BY: Internally .....

**STATUS**

STAFF: Operators 1 .....

Technicians 0 .....

BUDGET: Machine .....

Funded by Internally .....

TIME DISTRIBUTION: (e.g. basic research, isotope production, maintenance, etc.)

(a) Clinical Isotope Production 95 %

(b) Maintenance (Preventative and Service) 5 %

(c) .....

(d) .....

(e) .....

**CHARACTERISTIC BEAMS**

Accelerated Ions	E/A (MeV/u)	Current (part $\mu$ A)	
		Internal	External
(a) H-	11	200(H $\rightarrow$ )	100(p)
(b) .....	.....	.....	.....

1991  $\mu$ A-hours on target: 2250 .....

**FACILITIES**

SHIELDED AREA: Fixed .....

Standard Shields .....

Moveable .....

Target Stations: 4 .....

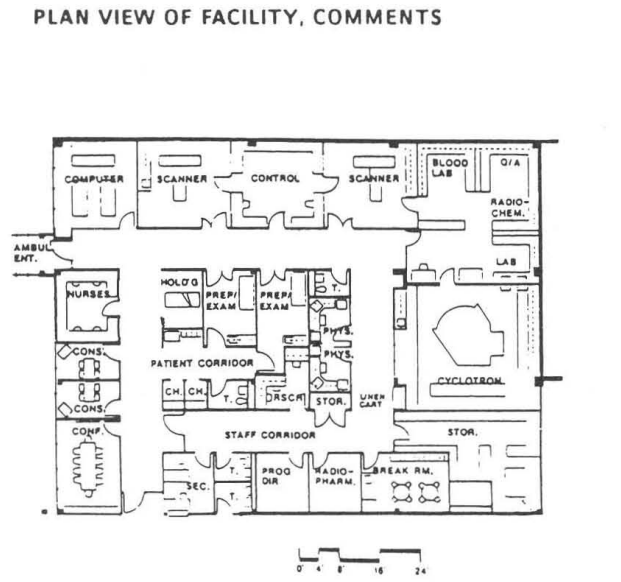
No. Served At Same Time: 2 .....

OTHER FACILITIES: .....

**REFERENCES/NOTES**

(a) .....

(b) .....



ENTRY NO. **CU122** Date .....

Cyclotron Model SIEMENS/CTI RDS 112 .....

Institution N. CALIF. PET IMAGING CENTER .....

Address 3195 FOLSOM BLVD, SACRAMENTO, CA 95816 .....

Tel 916-737-3200 .....

Fax 916-737-6203 .....

In Charge: H.C. PADGETT .....

**HISTORY**

MILESTONE DATES:

Installation MAY 1992 .....

First Beam JUNE 1992 .....

DESIGN/CONSTRUCTION BY: CTI CYCLOTRON SYSTEMS .....

COST: Accelerator \$1,000,000 .....

Facility \$500,000 .....

FUNDED BY: PRIVATE .....

**STATUS**

STAFF: Operators 2 .....

Technicians 1 .....

BUDGET: Machine .....

Funded by .....

TIME DISTRIBUTION: (e.g. basic research, isotope production, maintenance, etc.)

(a) CLINICAL ISOTOPE PROD, IN-HOUSE 90 %

(b) CLINICAL ISOTOPE PROD, DISTRIBUTION 10 %

(c) .....

(d) .....

(e) .....

**CHARACTERISTIC BEAMS**

Accelerated Ions	E/A (MeV/u)	Current (part $\mu$ A)	
		Internal	External
(a) H-	11	100	100
(b) .....	.....	.....	.....

1991  $\mu$ A-hours on target: .....

**FACILITIES**

SHIELDED AREA: Fixed 0 .....

Standard Shields .....

Moveable 0 .....

Target Stations: 4 .....

No. Served At Same Time: 2 .....

OTHER FACILITIES: CLINICAL MEDICAL IMAGING: SIEMENS 921 SCANNER .....

**REFERENCES/NOTES**

(a) .....

(b) .....

