

ENTRY NO. **CU120** Date

Cyclotron Model CTI RDS 112

Institution The Methodist Medical Center of Illinois

Address Peoria, IL, USA

Tel (309) 671-2738

Fax (309) 671-5185

In Charge: S. Zigler

HISTORY

MILESTONE DATES:

Installation Dec 1990

First Beam Jan-Feb 1991

DESIGN/CONSTRUCTION BY: Phillip Swager Assoc.

COST: Accelerator

Facility

FUNDED BY: Internally

STATUS

STAFF: Operators 1

Technicians 0

BUDGET: Machine

Funded by Internally

TIME DISTRIBUTION: (e.g. basic research, isotope production, maintenance, etc.)

(a) Clinical Isotope Production 95 %

(b) Maintenance (Preventative and Service) 5 %

(c)

(d)

(e)

CHARACTERISTIC BEAMS

Accelerated Ions	E/A (MeV/u)	Current (part μ A)	
		Internal	External
(a) H-	11	200(H \rightarrow)	100(p)
(b)

1991 μ A-hours on target: 2250

FACILITIES

SHIELDED AREA: Fixed

Standard Shields

Moveable

Target Stations: 4

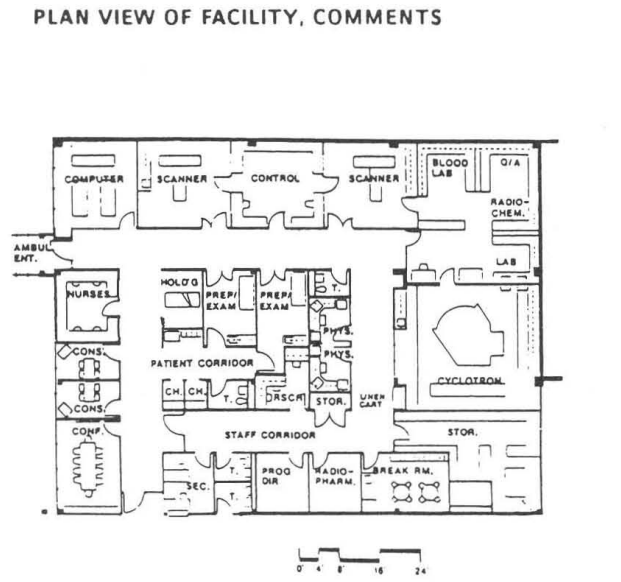
No. Served At Same Time: 2

OTHER FACILITIES:

REFERENCES/NOTES

(a)

(b)



ENTRY NO. **CU122** Date

Cyclotron Model SIEMENS/CTI RDS 112

Institution N. CALIF. PET IMAGING CENTER

Address 3195 FOLSOM BLVD., SACRAMENTO, CA 95816

Tel 916-737-3200

Fax 916-737-6203

In Charge: H.C. PADGETT

HISTORY

MILESTONE DATES:

Installation MAY 1992

First Beam JUNE 1992

DESIGN/CONSTRUCTION BY: CTI CYCLOTRON SYSTEMS

COST: Accelerator \$1,000,000

Facility \$500,000

FUNDED BY: PRIVATE

STATUS

STAFF: Operators 2

Technicians 1

BUDGET: Machine

Funded by

TIME DISTRIBUTION: (e.g. basic research, isotope production, maintenance, etc.)

(a) CLINICAL ISOTOPE PROD, IN-HOUSE 90 %

(b) CLINICAL ISOTOPE PROD, DISTRIBUTION 10 %

(c)

(d)

(e)

CHARACTERISTIC BEAMS

Accelerated Ions	E/A (MeV/u)	Current (part μ A)	
		Internal	External
(a) H-	11	100	100
(b)

1991 μ A-hours on target:

FACILITIES

SHIELDED AREA: Fixed 0

Standard Shields

Moveable 0

Target Stations: 4

No. Served At Same Time: 2

OTHER FACILITIES: CLINICAL MEDICAL IMAGING: SIEMENS 921 SCANNER

REFERENCES/NOTES

(a)

(b)

