

ENTRY NO. CUI22 Date
 Cyclotron Model CS-22
 Institution Amersham - Medi-Physics, Inc.
 Address 900 Durham Ave., South Plainfield, NJ 07080
 Tel 908-757-0500 Telex
 Fax EMAIL
 In Charge: R. Hubbard Reported by: W. Buela

HISTORY
 MILESTONE DATES:
 Installation July 1972 First Beam January 1973
 DESIGN/CONSTRUCTION BY: The Cyclotron Corp.
 COST: Accelerator Facility
 FUNDED BY:

STATUS
 STAFF: Operators 0 Technicians 4
 BUDGET: Machine Funded by
 TIME DISTRIBUTION: (e.g. basic research, isotope production, maintenance, etc.)
 (a) Isotope Production 80 %
 (b) Maintenance 20 %
 (c) %
 (d) %
 (e) %

CHARACTERISTIC BEAMS

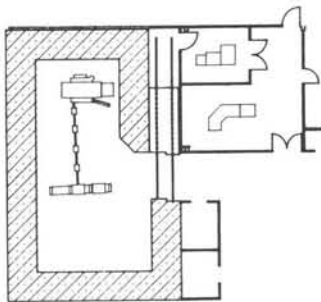
Accelerated Ions	E/A (MeV/u)	Current(part μ A)	
		Internal	External
(a) H^+	22	200	100
(b)			

1991 μ A-hours on target: 7×10^5

FACILITIES
 SHIELDED AREA: Fixed 85 m² Moveable 0 m²
 Target Stations: 2 No. Served At Same Time: 1
 OTHER FACILITIES:

REFERENCES/NOTES
 (a)
 (b)

PLAN VIEW OF FACILITY, COMMENTS



ENTRY NO. CUI23 Date
 Cyclotron Model Cyclone 30
 Institution Amersham - Medi-Physics, Inc.
 Address 900 Durham Ave., South Plainfield, NJ 07080
 Tel 908-757-0500 Telex
 Fax EMAIL
 In Charge: R. Hubbard Reported by: W. Buela

HISTORY
 MILESTONE DATES:
 Installation April 1989 First Beam Aug. 1989
 DESIGN/CONSTRUCTION BY: ION Beam Applications
 COST: Accelerator Facility
 FUNDED BY:

STATUS
 STAFF: Operators 0 Technicians 5
 BUDGET: Machine Funded by
 TIME DISTRIBUTION: (e.g. basic research, isotope production, maintenance, etc.)
 (a) Isotope Production 80 %
 (b) Maintenance 20 %
 (c) %
 (d) %
 (e) %

CHARACTERISTIC BEAMS

Accelerated Ions	E/A (MeV/u)	Current(part μ A)	
		Internal	External
(a) H^+	30	500	2x250
(b)			

1991 μ A-hours on target: 2×10^6

FACILITIES
 SHIELDED AREA: Fixed 130 m² Moveable 0 m²
 Target Stations: 4 No. Served At Same Time: 2
 OTHER FACILITIES:

REFERENCES/NOTES
 (a)
 (b)

PLAN VIEW OF FACILITY, COMMENTS

