

ENTRY NO. CU108 Date .....  
 Cyclotron Model RDS 11 MeV Siemens  
 Institution USC / SYNCOR  
 Address 2250 Alcazar St., Los Angeles CA 90033  
 Tel 213 225 0195 Telex .....  
 Fax 213 225 0198 EMAIL .....  
 In Charge: Ben Trickey Reported by: Gerald Kuhs  
 /Diana Tribbey

**HISTORY**

**MILESTONE DATES:**

Installation ..Sept..91..... First Beam .....Jan..92....  
 DESIGN/CONSTRUCTION BY: Laffin-Lietz Architect, Kemp  
 COST: Accelerator ..... Facility .....  
 FUNDED BY: ....USC./ SYNCOR.....

**STATUS**

STAFF: Operators .....2..... Technicians .....1.....  
 BUDGET: Machine ..... Funded by ..SYNCOR.....  
 TIME DISTRIBUTION: (e.g. basic research, isotope production, maintenance, etc.)  
 (a) ...PET clinical.....90... %  
 (b) ...PET research.....10... %  
 (c) ..... %  
 (d) ..... %  
 (e) ..... %

**CHARACTERISTIC BEAMS**

Accelerated Ions	E/A (MeV/u)	Current(part $\mu$ A)	
		Internal	External
(a) ...H <sup>+</sup> .....	11 MeV.....		
(b) .....			

1991  $\mu$ A-hours on target: .....

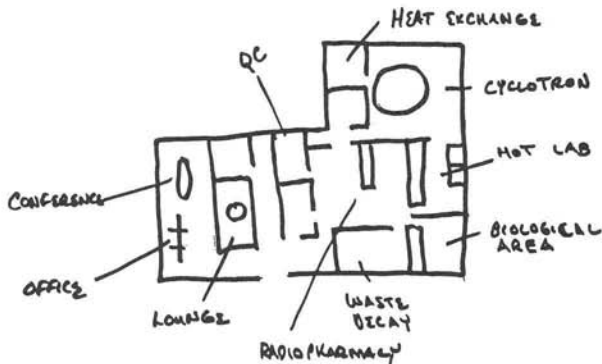
**FACILITIES** SELFSHIELDED

SHIELDED AREA: Fixed ..... m<sup>2</sup> Moveable ..... m<sup>2</sup>  
 Target Stations: .....4 No. Served At Same Time: ...2.....  
 OTHER FACILITIES: .....  
 On Site Radiopharmacy.....  
 Regional Distribution Center.....

**REFERENCES/NOTES**

(a) .....  
 (b) .....

**PLAN VIEW OF FACILITY, COMMENTS**



ENTRY NO. CU109 Date 9/8/92  
 Cyclotron Model GTI RDS, Fa. I. (first one)  
 Institution University of Wisconsin  
 Address 1530 Medical Science Center, 1300 Univ. Ave. Madison  
 Tel 608 262 2170 Telex .....  
 Fax 608 262 2413 EMAIL .....  
 In Charge: R.J. Moddes Reported by: R.J. Moddes

**HISTORY**

**MILESTONE DATES:**

Installation May.1986..... First Beam 18.days.after.arr.  
 DESIGN/CONSTRUCTION BY: CTI, Inc.....  
 COST: Accelerator \$499,322..... Facility \$55,000.....  
 FUNDED BY: Intramural Sources (UW).....

**STATUS**

STAFF: Operators .....5..... Technicians .....0.....  
 BUDGET: Machine ...30K..... Funded by .....UW.....  
 TIME DISTRIBUTION: (e.g. basic research, isotope production, maintenance, etc.)  
 (a) ...Basic Research.....30... %  
 (b) ...Isotope Production.....65... %  
 (c) ...Maintenance.....<5... %  
 (d) ..... %  
 (e) ..... %

**CHARACTERISTIC BEAMS**

Accelerated Ions	E/A (MeV/u)	Current(part $\mu$ A)	
		Internal	External
(a) ...protons.....	11.6.....	<60.....	<50.....
(b) .....			

1991  $\mu$ A-hours on target: 1400 hours since 1986/300 hrs in 91

**FACILITIES**

SHIELDED AREA: Fixed 400 ..... m<sup>2</sup> Moveable ..... m<sup>2</sup>  
 Target Stations: .....4 No. Served At Same Time: ...2.....  
 OTHER FACILITIES: vertical switching magnet for a downward directed beam for molten targets, 12 interchangeable targets, mach detector development.....

**REFERENCES/NOTES**

(a) .....  
 (b) .....

**PLAN VIEW OF FACILITY, COMMENTS**