

ENTRY NO. CU100 Date
 Cyclotron Model RDS 112
 Institution The Christ Hospital
 Address 2139 Auburn Ave. Cincinnati, OH 45219
 Tel (513) 369-8833 Telex
 Fax (513) 369-8835 EMAIL USR1436A@TSC.OC.EDU
 In Charge: Tom Kemme Reported by: Danny Bingham

HISTORY
 MILESTONE DATES:
 Installation 8/5-10/24/91 First Beam 9/5/91
 DESIGN/CONSTRUCTION BY: CTI/CTI
 COST: Accelerator Facility
 FUNDED BY:

STATUS
 STAFF: Operators 3 Technicians 2
 BUDGET: Machine Funded by
 TIME DISTRIBUTION: (e.g. basic research, isotope production, maintenance, etc.)
 (a) Isotope Production 95 %
 (b) Maintenance 5 %
 (c) %
 (d) %
 (e) %

CHARACTERISTIC BEAMS

Accelerated Ions	E/A (MeV/u)	Current(part μ A)	
		Internal	External
(a) H^-	11 MeV	300 μ A H^-	100 μ A H^+
(b)

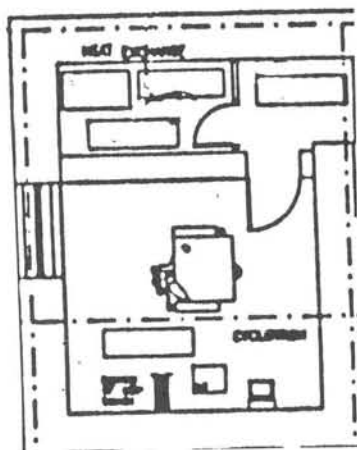
1991 μ A-hours on target: 4100

FACILITIES
 SHIELDED AREA: Fixed 100 m² Moveable m²
 Target Stations: 4 No. Served At Same Time: 2
 OTHER FACILITIES:

REFERENCES/NOTES

- (a)
- (b)

PLAN VIEW OF FACILITY, COMMENTS



ENTRY NO. CU102 Date 6/22/92
 Cyclotron Model CP-42
 Institution University of Texas - M.D. Anderson
 Address 1515 Holcombe Blvd., Houston, TX 77030
 Tel (713) 792-3238 Telex
 Fax (713) 792-3642 EMAIL MALLORY@UTMDAPHY
 In Charge: M. Mallory Reported by: M. Mallory

HISTORY
 MILESTONE DATES:
 Installation 1980 First Beam 1981
 DESIGN/CONSTRUCTION BY: The Cyclotron Corporation
 COST: Accelerator Facility
 FUNDED BY:

STATUS
 STAFF: Operators 5 Technicians
 BUDGET: Machine Funded by
 TIME DISTRIBUTION: (e.g. basic research, isotope production, maintenance, etc.)
 (a) Neutron Therapy 41 %
 (b) PET Isotopes 53 %
 (c) Research 6 %
 (d) %
 (e) %

CHARACTERISTIC BEAMS

Accelerated Ions	E/A (MeV/u)	Current(part μ A)	
		Internal	External
(a) H^-	30 - 42	50	50*
(b)

1991 Number of patients served: 250

FACILITIES
 SHIELDED AREA: Fixed 133.6 m² Moveable m²
 Target Stations: 4 No. Served At Same Time: 1
 OTHER FACILITIES:
 New construction to start 1993

REFERENCES/NOTES

- (a)
- (b)

*Target Limit

PLAN VIEW OF FACILITY, COMMENTS

